

# DUST

# EXTRACTORS

FOR FLOOR PREPARATION





# WELCOME TO THE DEPURECO DUST EXTRACTORS WORLD





# XM 20 JET CLEAN®



2,2 HP  
**POWER**

5425.01 in<sup>2</sup>  
**FILTER**

6 gal Bin  
**CAPACITY**

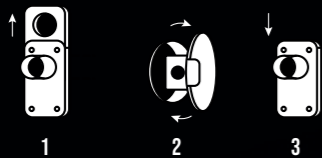
— Compact single-phase dust extractor with large filtering surface and semi-automatic filter cleaning system. It is ideal for dry and difficult dust. It can be connected to a power tool and remotely controlled. It has a 20 L detachable container.



**2 POWERFUL BY-PASS MOTORS**  
110V  
Max Airflow= 224 CFM  
Max Depression= 98 inH2O



**OPTIONAL H 14 HEPA FILTER**



**JET CLEAN CLEANING SYSTEM**

Clean the filter with a powerful jet of air without stopping the unit.

**DIRTY FILTER INDICATOR**

A LED light indicates when the filter is clogged and it's ready to be cleaned.

**RC OPTIONAL**

Remote control by power tool



**DETACHABLE BIN ON WHEELS**

**6 gal**

Conical polyester cartridge filter  
**M CLASS**

5425.01 in<sup>2</sup>



**INLET WITH SLIDING DAMPER**

Used in combination with the Jet Clean system

## TECHNICAL DATA

	MOTORS   TYPE	POWER	VOLTAGE   FREQUENCY	MAXIMUM VACUUM	MAXIMUM AIR FLOW	INLET	SURFACE AREA	CAPACITY	DIMENSIONS	HEIGHT	WEIGHT
		HP	V - Hz	inH2O	CFM	Ø in	in <sup>2</sup>	gal	in	in	lb
<b>XM 20</b>	2   By - Pass	2,2	110   60	98	224	1.97	5425.01	6	20.31 X 21.46	39.13	84

# XM 35 JET CLEAN® | XM 35 JET CLEAN® LP



2,2 HP  
**POWER**

5425.01 in<sup>2</sup>  
**FILTER**

Longopac or 99 gal Bin  
**CAPACITY**

— Small single-phase dust extractor with two by-pass motors, large filtering surface and semi-automatic filter cleaning system. It is ideal for dry and difficult dust. It can be connected to a power tool or to a floor polisher. The unit can also be fitted with a Longopac® bagging system.



**2 POWERFUL BY-PASS MOTORS**  
110V  
Max Airflow= 224 CFM  
Max Depression= 98 inH2O



**JET CLEAN CLEANING SYSTEM**

Clean the filter with a powerful jet of air without stopping the unit.

**DIRTY FILTER INDICATOR**

A LED light indicates when the filter is clogged and it's ready to be cleaned.

**RC OPTIONAL**

Remote control by power tool

Conical polyester cartridge filter  
**M CLASS**

5425.01 in<sup>2</sup>



Longopac® bagging system or 12 gal bin



**TANGENTIAL INLET WITH SLIDING DAMPER**

Used in combination with the Jet Clean system

## TECHNICAL DATA

	MOTORS   TYPE	POWER	VOLTAGE   FREQUENCY	MAXIMUM VACUUM	MAXIMUM AIR FLOW	INLET	SURFACE AREA	CAPACITY	DIMENSIONS	HEIGHT	WEIGHT
		HP	V - Hz	inH2O	CFM	Ø in	in <sup>2</sup>	gal	in	in	lb
<b>35</b>	2   By - Pass	2,2	110   60	98	224	1.97	5425.01	12	23.03 X 21.46	50.59	99
<b>35 LP</b>	2   By - Pass	2,2	110   60	98	224	1.97	5425.01	Longopac	23.03 X 21.46	54.92	99

# XM 35 FLOOR PREPARATION | LP



2,2 HP  
**POWER**

5425.01 in<sup>2</sup>  
**FILTER**

Longopac or 99 gal Bin  
**CAPACITY**

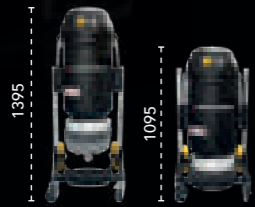
— Compact single-phase dust extractor with two by-pass motors, large filtering surface and automatic vibration filter cleaning system. With metal jacket filter protection it is ideal for concrete dust. It can be connected to a power tool or to a floor grinder. The unit can be dropdown or bedded for easy transport.



**2 POWERFUL BY-PASS MOTORS**  
110V  
Max Airflow= 224 CFM  
Max Depression= 98 inH2O



**RUBBER FEET**  
to transport the unit bedded



**SLIDING SYSTEM**  
to decrease the dimensions for easy transport



**RC STANDARD**  
Remote control by power tool

Tangential inlet with metal jacket system to **PROTECT THE FILTER**



Cartridge cleaning vibration system

Conical polyester cartridge filter **M CLASS**

Possibility to improve to **H13 HEPA filter**

5425.01 in<sup>2</sup>

Longopac® bagging system

**PUSH DOWN**

**BIGGER WHEELS**  
to run on all construction sites

## TECHNICAL DATA

	MOTORS   TYPE	POWER	VOLTAGE   FREQUENCY	MAXIMUM VACUUM	MAXIMUM AIR FLOW	INLET	SURFACE AREA	CAPACITY	DIMENSIONS	HEIGHT	WEIGHT
		HP	V - Hz	inH2O	CFM	Ø in	in <sup>2</sup>	gal	in	in	lb
FP	2   By - Pass	2,2	110   60	98	224	1.97	5425.01	12	23.03 X 21.46	54.92	99
FP LP	2   By - Pass	2,2	110   60	98	224	1.97	5425.01	Longopac	23.03 X 21.46	54.92	99

# MINIBULL



2,2 HP  
**POWER**

2325 in<sup>2</sup>  
**FILTER**

99 gal Bin  
**CAPACITY**

— Small single-phase industrial vacuum with two by-pass motors, large filtering surface and semi-automatic filter cleaning system. It is ideal for dry and difficult dust. It can be connected to a power tool or to a floor polisher. The vacuum cleaner can also be fitted with a Longopac® bagging system.



**2 POWERFUL BY-PASS MOTORS**  
110V  
Max Airflow= 224 CFM  
Max Depression= 98 inH2O



**OPTIONAL H 14 HEPA FILTER**

**DIRTY FILTER INDICATOR**

A LED light indicates when the filter is clogged and it's ready to be cleaned.



**MANUAL SHAKER CLEANING SYSTEM**

Smart handle for shaking the filter aggressively to release dust.



**RC OPTIONAL**  
Remote control by power tool



**M CLASS Stellar filter**

2325 in<sup>2</sup>



**MTF OPTIONAL**  
For difficult and sticky dust.

**12 gal DETACHABLE BIN ON WHEELS**

## TECHNICAL DATA

	MOTORS   TYPE	POWER	VOLTAGE   FREQUENCY	MAXIMUM VACUUM	MAXIMUM AIR FLOW	INLET	SURFACE AREA	CAPACITY	DIMENSIONS	HEIGHT	WEIGHT
		HP	V - Hz	inH2O	CFM	Ø in	cm <sup>2</sup>	gal	in	in	lb
MINIBULL	2   By - Pass	2,2	110   60	98	224	2.76	2325	12	21.65 X 24.41	48.82	99



# M 65/100



**POWER** 3,3 HP

**FILTER** 3720.01 in<sup>2</sup>

**CAPACITY** 17/26 gal Bin

— Single-phase dust extractor with three by-pass motors, excellent Class M filtering surface (1μ filtration efficiency) and manual filter cleaning system. It is ideal for dusts, solids and shavings. The vacuum cleaner can be fitted with a Longopac® bagging system.



**2 POWERFUL BY-PASS MOTORS**  
110V  
Max Airflow= 336 CFM  
Max Depression= 98 inH2O



**M CLASS** Stellar filter  
**MTF OPTIONAL** For difficult and sticky dust.  
3720.01 in<sup>2</sup>



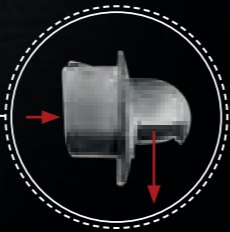
**MANUAL SHAKER CLEANING SYSTEM**

Smart handle for shaking the filter aggressively to release dust.

**OPTIONAL TANGENTIAL INLET**



**INLET WITH DEFLECTOR**



**17/26 gal**  
**DETACHABLE BIN ON WHEELS**

## TECHNICAL DATA

	MOTORS   TYPE	POWER	VOLTAGE   FREQUENCY	MAXIMUM VACUUM	MAXIMUM AIR FLOW	INLET	SURFACE AREA	CAPACITY	DIMENSIONS	HEIGHT	WEIGHT
		HP	V - Hz	inH2O	CFM	Ø in	in <sup>2</sup>	gal	in	in	lb
<b>M 65</b>	3   By - Pass	3,3	110   60	98	336	2.76	3720.01	17	25.98 X 31.50	59.65	176
<b>M 100</b>	3   By - Pass	3,3	110   60	98	336	2.76	3720.01	26	25.98 X 31.50	59.65	176

# M 100 LONGOPAC



**POWER** 3,3 HP

**FILTER** 3720.01 in<sup>2</sup>

**CAPACITY** Longopac

— Single-phase dust extractor with three by-pass motors, excellent Class M filtering surface (1μ filtration efficiency) and manual filter cleaning system. It is ideal for dusts, solids and shavings. The vacuum cleaner is fitted with a practical Longopac® bagging system.



**2 POWERFUL BY-PASS MOTORS**  
110V  
Max Airflow= 336 CFM  
Max Depression= 98 inH2O



**M CLASS** Stellar filter  
**MTF OPTIONAL** For difficult and sticky dust.  
3720.01 in<sup>2</sup>



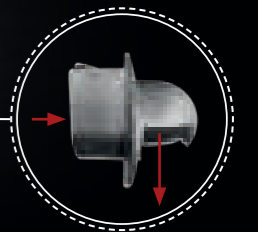
**MANUAL SHAKER CLEANING SYSTEM**

Smart handle for shaking the filter aggressively to release dust.

**OPTIONAL TANGENTIAL INLET**



**INLET WITH DEFLECTOR**



Longopac® bagging system

## TECHNICAL DATA

	MOTORS   TYPE	POWER	VOLTAGE   FREQUENCY	MAXIMUM VACUUM	MAXIMUM AIR FLOW	INLET	SURFACE AREA	CAPACITY	DIMENSIONS	HEIGHT	WEIGHT
		HP	V - Hz	inH2O	CFM	Ø in	in <sup>2</sup>	gal	in	in	lb
<b>M 100 LP</b>	3   By - Pass	3,3	110   60	98	336	2.76	3720.01	Longopac	25.98 X 31.50	59.65	154

# M 65/100 JET CLEAN®



**POWER** 3,3 HP

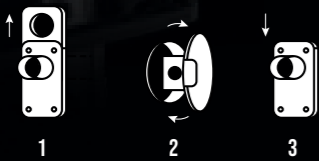
**FILTER** 5425.01 in<sup>2</sup>

**CAPACITY** 17/26 gal Bin

— Single-phase dust extractor with three by-pass motors, large filtering surface and semi-automatic filter cleaning system. It is ideal for dry and difficult dust. It can be connected to a floor polisher or work in other situations where the dust is fine and binding.



**2 POWERFUL BY-PASS MOTORS**  
110V  
Max Airflow= 336 CFM  
Max Depression= 98 inH2O



### JET CLEAN CLEANING SYSTEM

Clean the filter with a powerful jet of air without stopping the unit.

### OPTIONAL H 14 HEPA FILTER



**17/26 gal**  
**DETACHABLE BIN ON WHEELS**

**INLET WITH SLIDING DAMPER**  
Used in combination with the Jet Clean system



Conical polyester cartridge filter  
**M CLASS**  
5425.01 in<sup>2</sup>



## TECHNICAL DATA

	MOTORS   TYPE	POWER	VOLTAGE   FREQUENCY	MAXIMUM VACUUM	MAXIMUM AIR FLOW	INLET	SURFACE AREA	CAPACITY	DIMENSIONS	HEIGHT	WEIGHT
		HP	V - Hz	inH2O	CFM	Ø in	in <sup>2</sup>	gal	in	in	lb
<b>M 65</b>	3   By - Pass	3,3	110   60	98	336	1.97	5425.01	17	25.98 X 31.50	51.18/59.65	176
<b>M 100</b>	3   By - Pass	3,3	110   60	98	336	1.97	5425.01	26	25.98 X 31.50	51.18/59.65	176

# M 100 JET CLEAN® LONGOPAC



**POWER** 3,3 HP

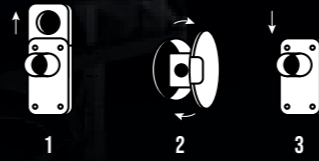
**FILTER** 5425.01 in<sup>2</sup>

**CAPACITY** Longopac

— Single-phase dust extractor with three by-pass motors, large filtering surface and semi-automatic filter cleaning system. It is ideal for dry and difficult dust. It can be connected to a floor polisher or work in other situations where the dust is fine and binding. The vacuum cleaner is fitted with a practical Longopac® bagging system.



**2 POWERFUL BY-PASS MOTORS**  
110V  
Max Airflow= 336 CFM  
Max Depression= 98 inH2O



### JET CLEAN CLEANING SYSTEM

Clean the filter with a powerful jet of air without stopping the unit.

### OPTIONAL H 14 HEPA FILTER



Conical polyester cartridge filter  
**M CLASS**  
5425.01 in<sup>2</sup>



**INLET WITH SLIDING DAMPER**  
Used in combination with the Jet Clean system



Longopac®  
bagging system

## TECHNICAL DATA

	MOTORS   TYPE	POWER	VOLTAGE   FREQUENCY	MAXIMUM VACUUM	MAXIMUM AIR FLOW	INLET	SURFACE AREA	CAPACITY	DIMENSIONS	HEIGHT	WEIGHT
		HP	V - Hz	inH2O	CFM	Ø in	in <sup>2</sup>	gal	in	in	lb
<b>M 100 LP</b>	3   By - Pass	3,3	110   60	98	336	1.97	5425.01	Longopac	25.98 X 31.50	59.65	154



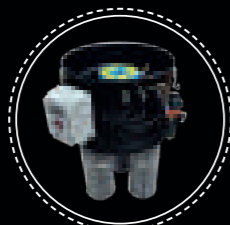
# M 65 SP

**POWER** 3,3 HP

**FILTER** 13950 in<sup>2</sup>

**CAPACITY** 17/26 gal Bin

— Single phase 3 motor mobile unit designed to manage big quantities of fine dust. A reverse jet filter cleaning system keeps the filter cartridges constantly cleaned. The material is collected directly into a 17 or 26 gal detachable bin on wheels.



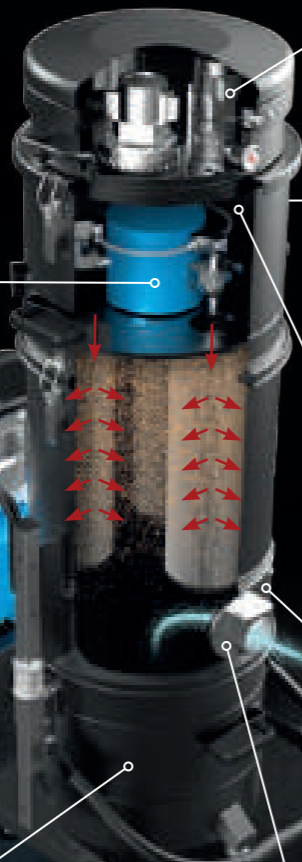
**SP SYSTEM**

Ideal for large quantities of fine and difficult dusts. The cleaning system is completely automatic.



**3 POWERFUL BY-PASS MOTORS**

110V  
Max Airflow= 336 CFM  
Max Depression= 98 inH2O



**SP SYSTEM CONTROLLER**

The SP system is controlled by an electronic controller installed on board.



**OPTIONAL H 14 HEPA FILTER**

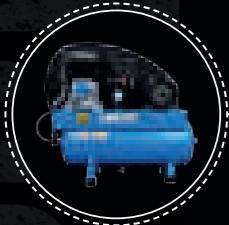
22.000 cm<sup>2</sup>

**OPTIONAL TANGENTIAL INLET**



**OPTIONAL COMPRESSOR**

If the compressed air is not available it's possible to install a compressor on board.

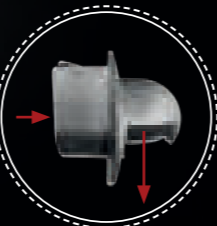


17/26 gal



**DETACHABLE BIN ON WHEELS**

**INLET WITH DEFLECTOR**



## TECHNICAL DATA

	MOTORS   TYPE	POWER	VOLTAGE   FREQUENCY	MAXIMUM VACUUM	MAXIMUM AIR FLOW	INLET	SURFACE AREA	CAPACITY	DIMENSIONS	HEIGHT	WEIGHT
		HP	V - Hz	inH2O	CFM	Ø in	in <sup>2</sup>	gal	in	in	lb
M 65	3   By - Pass	3,3	110   60	98	336	2,76	13950	17	25,98 X 31,50	59,65	176
M 100	3   By - Pass	3,3	110   60	98	336	2,76	13950	26	25,98 X 31,50	59,65	176

# M 65 SP LONGOPAC

**POWER** 3,3 HP

**FILTER** 13950 in<sup>2</sup>

**CAPACITY** Longopac

— Single phase 3 motor mobile unit designed to manage big quantities of fine dust. A reverse jet filter cleaning system keeps the filter cartridges constantly cleaned. The material is collected directly into an endless Longopac® bagging system.



**SP SYSTEM**

Ideal for large quantities of small and difficult dusts. The cleaning system is completely automatic.



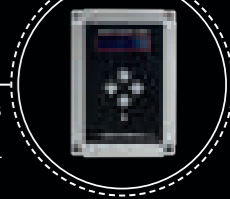
**3 POWERFUL BY-PASS MOTORS**

110V  
Max Airflow= 336 CFM  
Max Depression= 98 inH2O



**SP SYSTEM CONTROLLER**

The SP system is controlled by an electronic controller installed on board.



**OPTIONAL H 14 HEPA FILTER**

22.000 cm<sup>2</sup>

**OPTIONAL TANGENTIAL INLET**



**OPTIONAL COMPRESSOR**

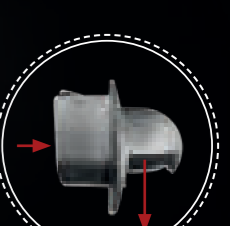
If the compressed air is not available it's possible to install a compressor on board.



**LONGOPAC BAGGING SYSTEM**



**INLET WITH DEFLECTOR**



## TECHNICAL DATA

	MOTORS   TYPE	POWER	VOLTAGE   FREQUENCY	MAXIMUM VACUUM	MAXIMUM AIR FLOW	INLET	SURFACE AREA	CAPACITY	DIMENSIONS	HEIGHT	WEIGHT
		HP	V - Hz	inH2O	CFM	Ø in	in <sup>2</sup>	gal	in	in	lb
M 100 LP	3   By - Pass	3,3	110   60	98	336	2,76	13950	Longopac	25,98 X 31,50	59,65	154



# TX 300 | 400 P | 550 P | 750

# PUMA 15 P | 18 P

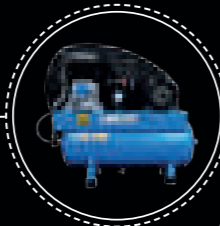


— Portable dust extractor for applications requiring more power. It is fitted with a large standard Class M polyester filter and safety relief valve. The material is collected in a practical 26 gal detachable container on wheels.



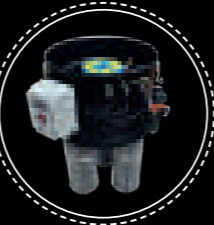
### OPTIONAL COMPRESSOR

If the compressed air is not available it's possible to install a compressor on board.



### SP SYSTEM

Ideal for large quantities of small and difficult dusts. The cleaning system is completely automatic.



### SP SYSTEM CONTROLLER

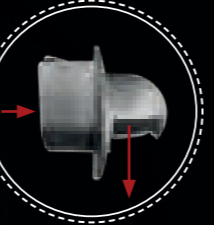
The SP system is controlled by an electronic controller installed on board.



### OPTIONAL TANGENTIAL INLET



### INLET WITH DEFLECTOR



**26 gal** DETACHABLE BIN ON WHEELS

### SECURITY VALVE

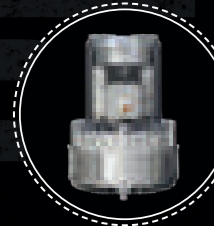
Pressure relief valve.



### SIDE CHANNEL BLOWER

Designed to work 24/7 without maintenance

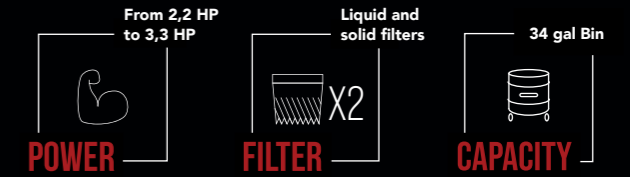
- From 4.6 to 20 HP
- High vacuum up to 169 inH2O
- High flow up to 740 CFM
- Noise level <76 db
- Protection from IP 55 to IP 68



## TECHNICAL DATA

	MOTORS   TYPE	POWER	VOLTAGE   FREQUENCY	MAXIMUM VACUUM	MAXIMUM AIR FLOW	INLET	SURFACE AREA	CAPACITY	DIMENSIONS	HEIGHT	WEIGHT
		HP	V - Hz	inH2O	CFM	Ø in	in²	gal	in	in	lb
TX 300	Side Channel Blower	4.6	480   60	110	300	2.76	13.950	26	25.6 X 43.3	55.12	287
TX 400 P	Side Channel Blower	6.2	480   60	60	350	2.76	13.950	26	25.6 X 43.3	55.12	309
TX 550 P	Side Channel Blower	8.4	480   60	112	382	2.76	13.950	26	25.6 X 43.3	55.12	342
TX 750	Side Channel Blower	11.5	480   60	169	382	2.76	13.950	26	25.6 X 43.3	55.12	419
PUMA 15P	Side Channel Blower	13	480   60	129	647	3.94	6975	46	33.5 X 61	77.95	595
PUMA 18P	Side Channel Blower	20	480   60	135	740	3.94	6975	46	33.5 X 61	77.95	783

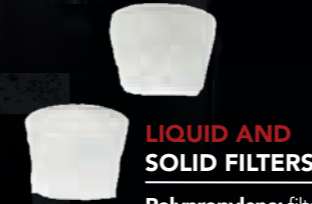
# WD 132 | 132 P | 133



— Single-phase industrial vacuum with three by-pass motors, designed to vacuum liquids, even if they contain debris and light sludge. The version with a submersible discharge pump can be chosen to continuously vacuum and discharge even from a few metres away.



**2 POWERFUL BY-PASS MOTORS**  
110V  
Max Airflow= 336 CFM  
Max Depression= 98 inH2O



### LIQUID AND SOLID FILTERS

**Polypropylene:** filters and separates any solid materials eventually present in the vacuumed liquids.  
**Polyester:** used when vacuuming dust. Both filters are washable.



### OPTIONAL WATER PUMP

Continuous discharge pump.

**34 gal**

### INLET WITH DEFLECTOR

### FLOATING SYSTEM

The floating system is used to stop the aspiration when the liquid reaches the limit capacity.

### LIQUID LEVEL INDICATOR

Check the liquid level inside the bin from the outside of the vacuum cleaner.

### DISCHARGE SYSTEM

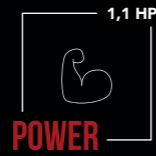
Discharge happens by gravity. At the bottom of the machine there is a valve, which ensures easy discharge of the liquids and particles collected inside the bin.

## TECHNICAL DATA

	MOTORS   TYPE	POWER	VOLTAGE   FREQUENCY	MAXIMUM VACUUM	MAXIMUM AIR FLOW	INLET	SURFACE AREA	CAPACITY	DIMENSIONS	HEIGHT	WEIGHT
		HP	V - Hz	inH2O	CFM	Ø in	in²	gal	in	in	lb
WD 132	3   By - Pass	2,2	110   60	98	224	2.76	-	34	22.83 X 20.87	45.67	84
WD 132 P	3   By - Pass	2,2	110   60	98	224	2.76	-	34	22.83 X 20.87	45.67	104
WD 133	3   By - Pass	3,3	110   60	98	336	2.76	-	34	22.83 X 20.87	45.67	88



# KUBE



The KUBE vacuum cleaner allows you to combine strong suction power with double filter filtration that prevents clogging. Works with any power tool max 1500 w. The suction starts when the tool is turned on and continues for a few moments after the power tool is turned off thanks to the integrated AUTO STOP function to ensure the suction of residues.

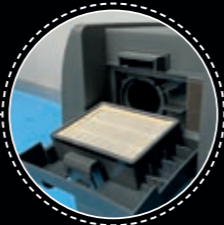


### M CLASS FILTER

With cartridge cleaning vibration system

### EXIT FILTER

Filters the air that exit the vacuum cleaner.



### BLOWER MODE

Insert the attachment in the back of the vacuum to blow air instead of sucking air.



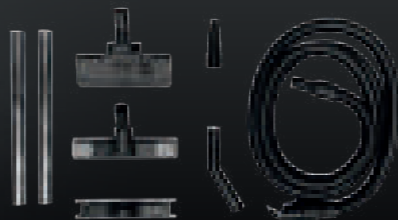
### RC SHUKO

Remote control by power tool

### SUCTION INLET



## KUBE ACCESSORIES



## TECHNICAL DATA

	MOTORS   TYPE	POWER	VOLTAGE   FREQUENCY	MAXIMUM VACUUM	MAXIMUM AIR FLOW	INLET	CAPACITY	DIMENSIONS	HEIGHT	WEIGHT
		HP	V - Hz	inH2O	CFM	Ø in	gal	in	in	lb
KUBE	1   By -Pass	1.1	110   60	88	112	1.5	8	20 X 14.2	22	24

# ACCESSORIES

## SEPARATORS

Trolley-mounted cyclonic separators (Ø15.35 and Ø17.71 inlets) with high efficiency dust abatement in sturdy painted metal. The separators are fitted with an automatic Longopac® bagging system.



LONGOPAC® SEPARATOR WITH CYCLONE Ø15.35



LONGOPAC® SEPARATOR WITH CYCLONE Ø17.71

## OTHER ACCESSORIES



ANTISTATIC RUBBER CONIC SECTION

DOUBLE BEND TUBE FOR FLOOR BRUSH

FLOOR BRUSH WITH BRISTLES

FLOOR SQUEEGEE WITH RUBBER STRIPS

PUR PIPE Ø 40, 50

EVA FLEX PIPE Ø 40, 50

PVC ROUND BRUSH

FIXED VACUUMING TOOL

ANTISTATIC FLAT PIPE

**GET YOUR 3 YEARS WARRANTY NOW** WITH YOUR VACUUM CLEANER ORDER, IF YOU PURCHASE THE CORRESPONDING REPLACEMENT FILTER



# HERE FOR THE TOUGHEST JOB





# BECAUSE SOMETIMES YOU NEED A GAME CHANGER



DEPURECO INDUSTRIAL VACUUMS SRL

DUTTON RD SAN MARCOS, TEXAS, U.S.A. 78666.

TEL. +1 512-827-3701

DEPURECO@DEPURECO.COM WWW.DEPURECOUSA.COM