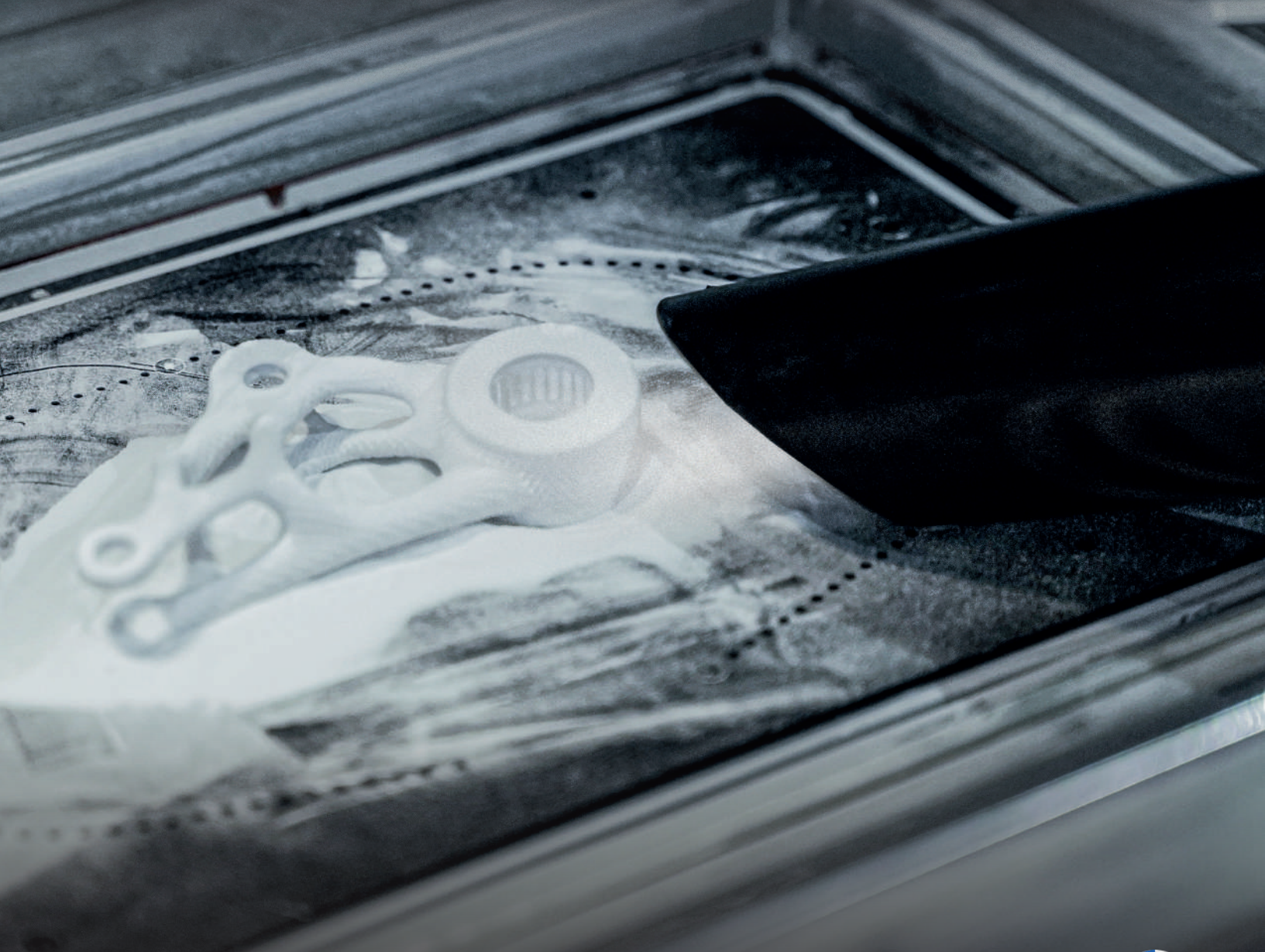


VACUUM SOLUTIONS FOR **ADDITIVE** MANUFACTURING







**NOT JUST
ANY VACUUM**

BL PRO



POWER
2.01 HP



SURFACE AREA
930 in²



CAPACITY
11 gal

- BL PRO Z22 is a compact and powerful vacuum in the Depureco range. With a powerful brushless motor, it allows to work fast and to vacuum very fine powders. The main filter is in antistatic polyester, M Class Certified. It is possible to install, in addition, an HEPA 13 filter to vacuum even finer dusts.



Head with double stage filtration system.



BRUSHLESS MOTOR
230 V / 110 V

Ergonomical handles to lift the head from the bin.

PRESSURE GAUGE

Dirty filter indicator.



M CLASS ANTISTATIC STAR FILTER



[OPTIONAL] FILTER CARTRIDGE HEPA H13



ALL COMPONENTS ARE GROUNDED

INLET WITH DEFLECTOR

STAINLESS STEEL BIN AISI 304

gal **11**

Ergonomical handles to discharge the bin.

TECHNICAL DATA



Ex ATEX MARKING: II 3D Ex htc IIB T 140°C Dc

	MOTORS TYPE	POWER	VOLTAGE FREQUENCY	MAXIMUM VACUUM	MAXIMUM AIR FLOW	INLET	DIMENSIONS	HEIGHT	WEIGHT
		HP	V - Hz	inH2O	CFM	Ø in	in	in	lb
BL PRO	Brushless	2.01	110/230 50/60	92	129	1,92	20 X 21	41	83.78

ACTIVE MANUFACTURING

BL 20 JetClean®



POWER
2.01 HP

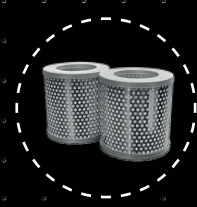


SURFACE AREA
5270 in²



CAPACITY
5 gal

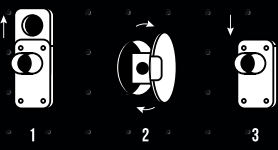
- The BL 20 JC Z22 II3D is a compact vacuum suitable for working in potentially explosives zones. A very large antistatic M Class filter cartridge stops all dust collected. JetClean® system permits to keep the filter costantly clean. It is possible to install in addition a huge Hepa 14 filter. The unit is provided with a detachable bin on wheels with 5 gal capacity.



Head with double stage filtration system.



JETCLEAN SYSTEM
Cleans the filter with a powerful jet of air without stopping the unit.



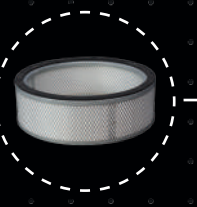
ALL COMPONENTS ARE GROUNDED

STAINLESS STEEL BIN
AISI 304

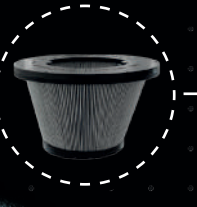
gal **5**



BRUSHLESS MOTOR
230 V / 110 V



[OPTIONAL] FILTER CARTRIDGE
HEPA H14
3410 in²



M CLASS ANTISTATIC CONICAL FILTER CARTRIDGE
5720 in²



INLET WITH SLIDING DAMPER

Used in combination with the Jet Clean system.

TECHNICAL DATA

NFPA
652 compliance

Ex ATEX MARKING: II 3D Ex htc IIB T 140°C Dc

	MOTORS TYPE	POWER	VOLTAGE FREQUENCY	MAXIMUM VACUUM	MAXIMUM AIR FLOW	INLET	DIMENSIONS	HEIGHT	WEIGHT
		HP	V - Hz	inH2O	CFM	Ø in	in	in	lb
BL 20	Brushless	2.01	110/230 50/60	92	129	1.96	20 X 21	41	83.78

ACTIVE MANUFACTURING

BL 45 JetClean®



POWER
2.01 HP

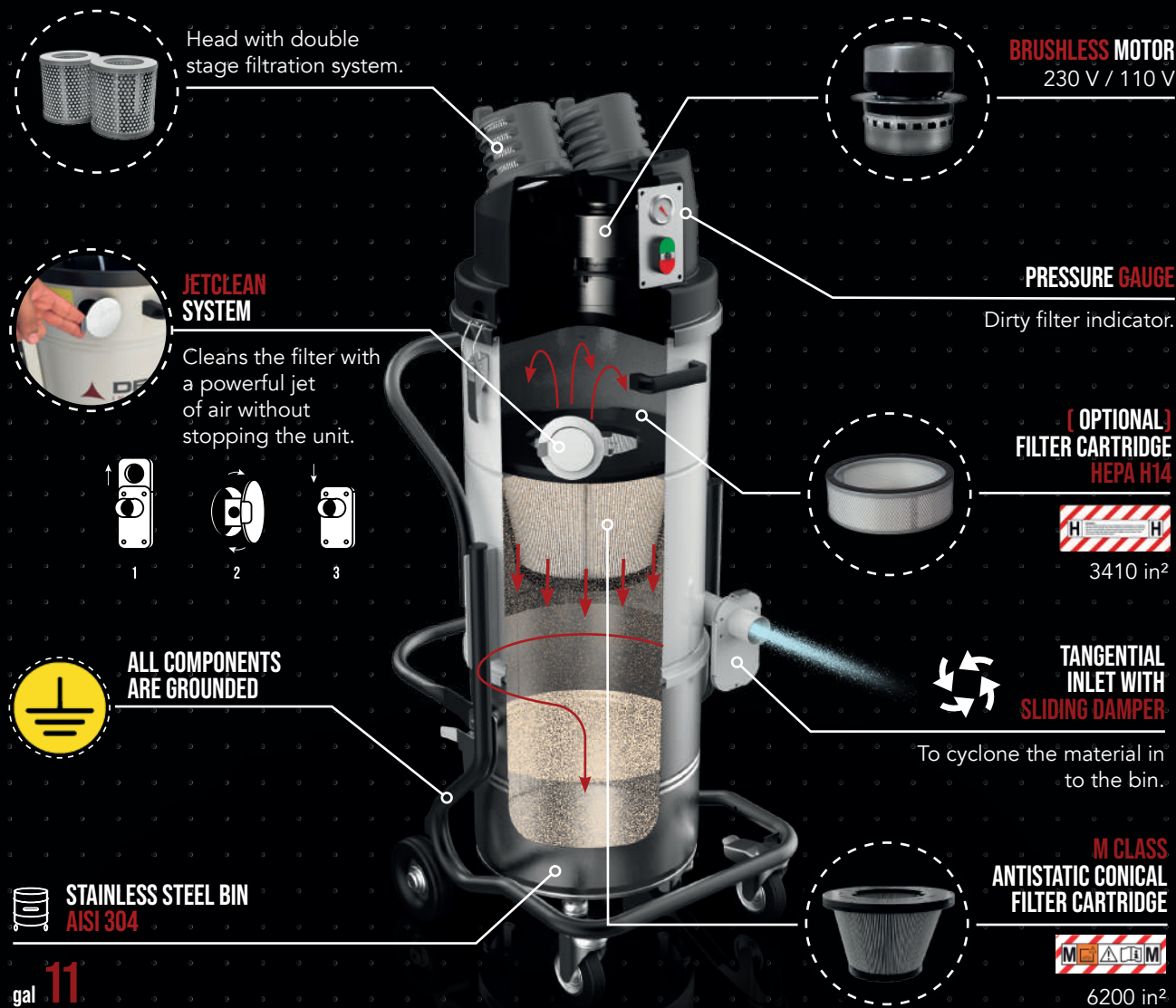


SURFACE AREA
6200 in²



CAPACITY
11 gal

- The BL 45 JC Z22 II3D is a compact vacuum suitable for vacuuming fine dusts in potentially explosives zones. A very large M Class filter cartridge stops all dust collected. It is possible to install in addition a huge Hepa 14 filter. The JetClean® system permits to keep the filter constantly clean. The unit is provided with a detachable bin on wheels with 11 gal capacity.



TECHNICAL DATA

NFPA 652 compliance **Ex** ATEX MARKING: II 3D Ex htc IIB T 140°C Dc

	MOTORS TYPE	POWER	VOLTAGE FREQUENCY	MAXIMUM VACUUM	MAXIMUM AIR FLOW	INLET	DIMENSIONS	HEIGHT	WEIGHT
		HP	V - Hz	inH2O	CFM	Ø in	in	in	lb
BL 45 JC	Brushless	2.01	110/230 50/60	92	129	1,96	20 X 21	51.09	99

ADITIVE MANUFACTURING

M 65 NFPA



POWER
3.3 HP

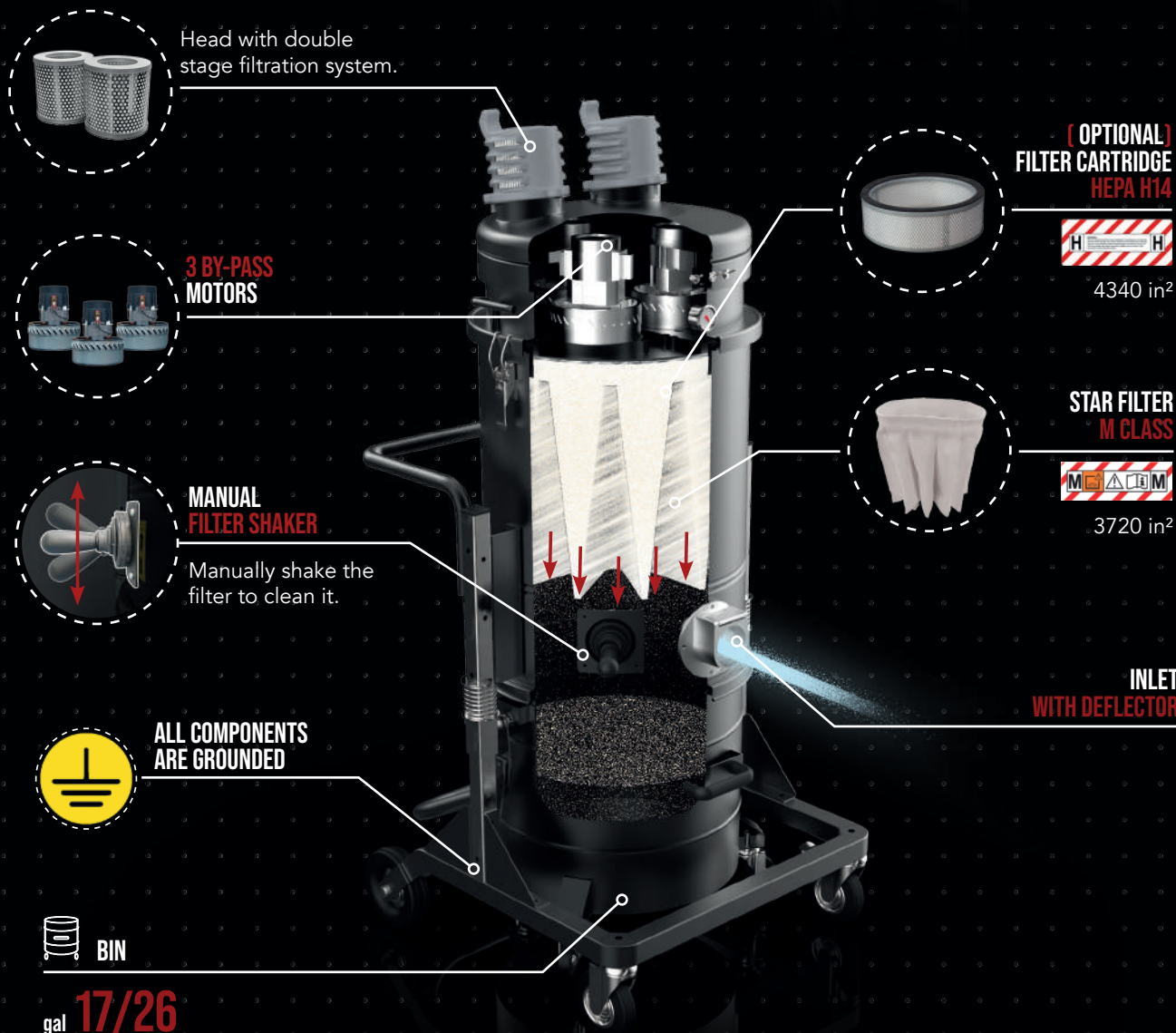


SURFACE AREA
3720 in²



CAPACITY
17/26 gal

- Single-phase industrial vacuum with three by-pass motors, excellent Class M filtering surface (1 μ filtration efficiency) and manual filter cleaning system. It is ideal for dusts and powders, even very fine ones. The unit is provided with a detachable bin on wheels with 17/26 gal capacity.



TECHNICAL DATA



	MOTORS TYPE	POWER	VOLTAGE FREQUENCY	MAXIMUM VACUUM	MAXIMUM AIR FLOW	INLET	DIMENSIONS	HEIGHT	WEIGHT
		HP	V - Hz	inH ₂ O	CFM	Ø in	in	in	lb
M 65 NFPA	By-Pass	3.3	110/60	98	336	2.76	26 X 32	59.65	176

BECAUSE SOMETIMES YOU NEED A GAME CHANGER



DEPURECO INDUSTRIAL VACUUMS USA

19121 MARKETPLACE AVENUE, BUILDING 1, SUITE 165
PLUM CREEK BUSINESS PARK - KYLE, TEXAS 78640
+1 737 70 44 347
INFO@DEPURECOUSA.COM - WWW.DEPURECOUSA.COM