



DEPURECO<sup>®</sup> USA  
INDUSTRIAL VACUUMS



DEPURECO  
DN AIR 800

# CENTRALIZED VACUUM SYSTEMS



*IF YOU HAVE A  
WE HAVE THE  
BUILT FOR IT*





# A JOB TO DO E VACUUM





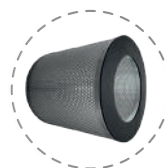
# PUMA FIX



## PRODUCT DESCRIPTION

PUMA FIX mounts a double-stage side channel blower in parallel with high air flow. The tangential inlet together with the robust cyclone welded inside the filtration chamber, guarantee excellent efficiency even with the finest powders. The cleaning operations are totally autonomous and the involvement of the operator is not necessary. Depureco's PUMA FIX industrial vacuum cleaner is equipped with a practical and sturdy 46 gal container, equipped with a release system that allows you to collect the vacuumed material and dispose of it with ease.

## OPTIONS



### HEPA

Absolute H14 filter  
0,18 µ  
17.100 in<sup>2</sup>



### E.P. WITH DISPLAY

Management and monitoring software with touch screen panel



### INVERTER

Automatic suction speed management system for multi-operator systems



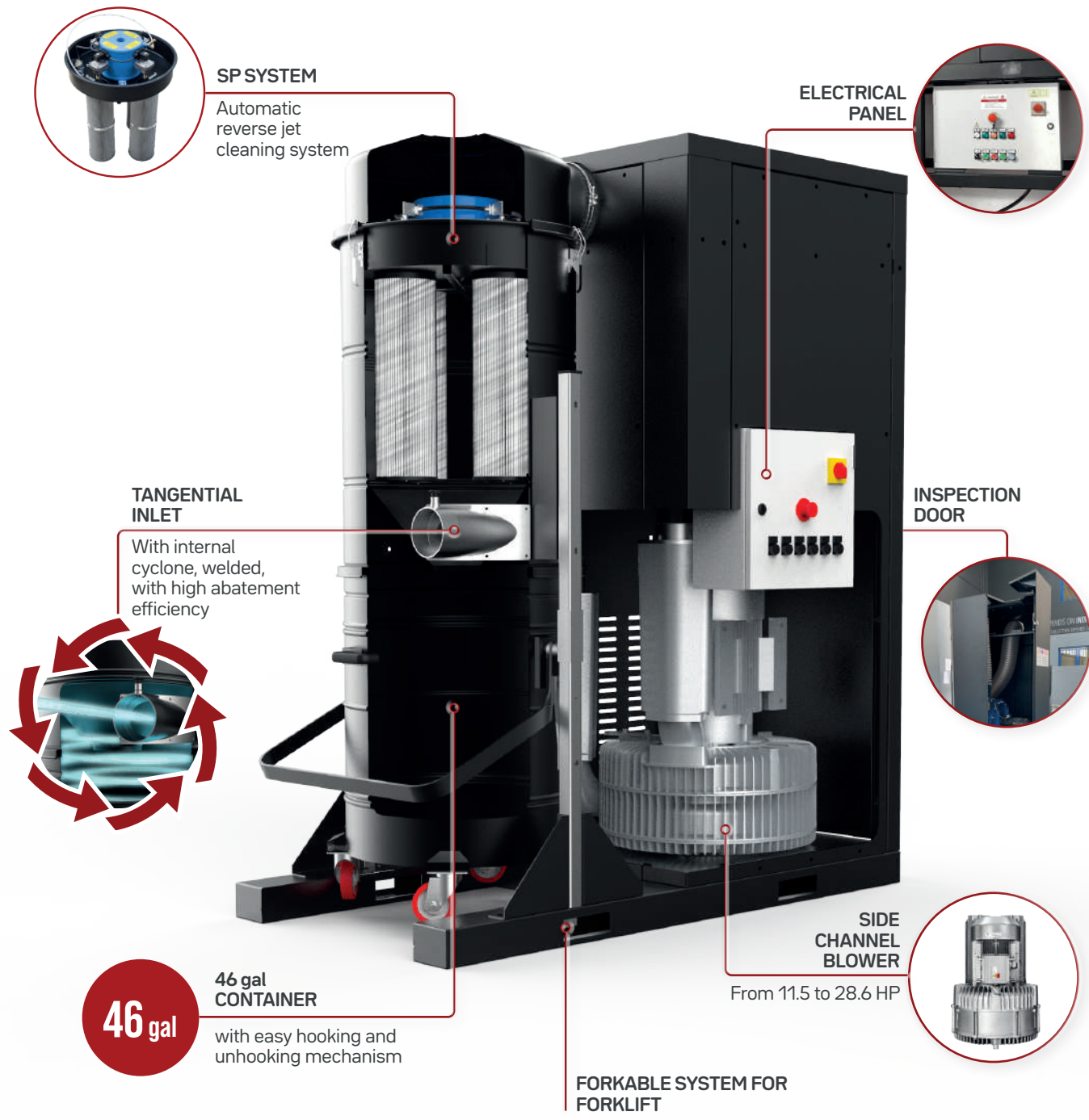
## TECHNICAL DATA

	Power HP	Voltage/ Frequency V - HZ	Air flow CFM	MAX vacuum inH2O	Vacuum in continuous inH2O	Filter system in <sup>2</sup>	Filter in <sup>2</sup>	Noise level dB [A]
<b>PUMA FIX</b>			std	std	std	SP	HEPA*	
<b>10</b>	11.5	480 - 60	490	120	100	18.600	17:100	74
<b>15 P</b>	17.5	480 - 60	660	120	110	18.600	17:100	74
<b>15 S</b>	23.2	480 - 60	364	220	200	18.600	17:100	74
<b>18 S</b>	16.9	480 - 60	520	240	200	18.600	17:100	74
<b>20</b>	23.2	480 - 60	660	140	130	18.600	17:100	74
<b>25</b>	28.6	480 - 60	940	148	137	18.600	17:100	74

\* Optional HEPA filter for all models



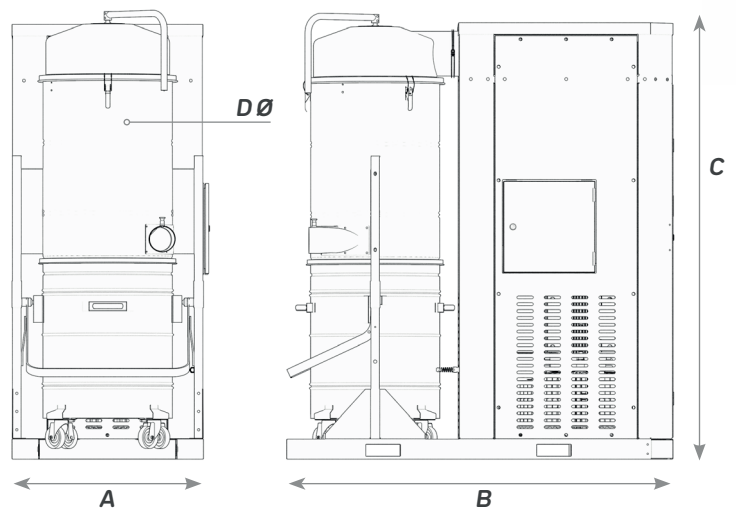
# CENTRALIZED VACUUM SYSTEMS



**46 gal**

**46 gal CONTAINER**  
with easy hooking and unhooking mechanism

Deep in	Length in	Height in	Chamber diameter in
A	B	C	D Ø
33	67	77.5	22.5
33	67	77.5	22.5
33	67	77.5	22.5
33	67	77.5	22.5
33	67	77.5	22.5
33	67	77.5	22.5





# HF



## PRODUCT DESCRIPTION

The HF industrial vacuum cleaner is a model designed for the creation of centralized multi-operator systems, even large ones or for the transport of material from one place to another. The very powerful turbine is installed in the rear part of the aspirator protected by a sheet metal cover which also reduces the noise level. The front cylindrical chamber houses a large surface filtration system with automatic filter cleaning system. Specifically, there are 4 independent cartridges in category M antistatic polyester, capable of retaining dust up to 1 micron in particle size.

## OPTIONS



### SP

Automatic reverse jet cleaning system



### INVERTER

Automatic suction speed management system for multi-operator systems.



### HEPA

Absolute H14 filter  
0,18  $\mu$   
4.340/  
17.100



### E.P. WITH DISPLAY

Management and monitoring software with touch screen panel.

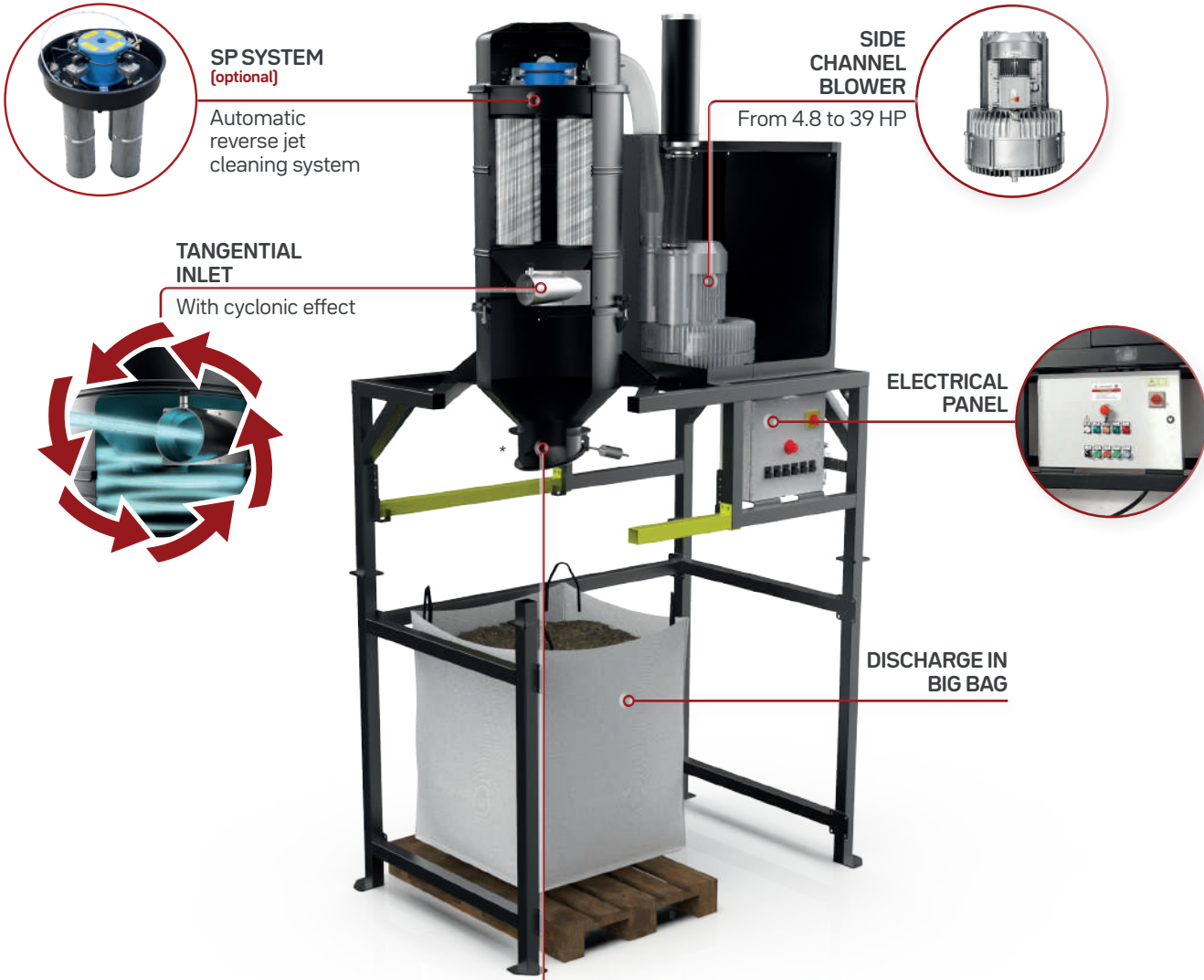


## TECHNICAL DATA

	Power HP	Voltage/ Frequency V - HZ	Air flow CFM <i>std</i>	MAX vacuum inH2O <i>std</i>	Vacuum in continuous inH2O <i>std</i>	Filter system in <sup>2</sup>		Filter in <sup>2</sup> HEPA*	Noise level dB [A]
						PSC	SP**		
HF 5.5	8.5	480 - 60	400	100	80	3.720	13.950	4.340	73
HF 10	11.5	480 - 60	490	120	100	7.000	18.600	17.100	74
HF 15 P	17.5	480 - 60	660	220	200	7.000	18.600	17.100	74
HF 15 S	23.2	480 - 60	364	220	200	7.000	18.600	17.100	74
HF 18	16.9	480 - 60	520	240	200	7.000	18.600	17.100	74
HF 30 P	30	480 - 60	1354	73	64	17.100	27.900	17.100	78
HF 30 S	30	480 - 60	776	193	176	17.100	27.900	17.100	78
HF 35 P	39	480 - 60	1430	135	110	17.100	27.900	17.100	78
HF 300	4.8	480 - 60	247	119	108	3.720	14.000	4.400	74

\* Optional HEPA filter for all models  
\*\* SP optional for standard HF





**SP SYSTEM**  
*(optional)*

Automatic reverse jet cleaning system

**SIDE CHANNEL BLOWER**

From 4.8 to 39 HP

**TANGENTIAL INLET**

With cyclonic effect



**ELECTRICAL PANEL**

**DISCHARGE IN BIG BAG**

**DISCHARGE SYSTEM**

\* Discharge system not included



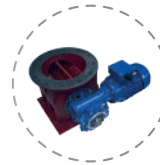
Manual discharge butterfly valve



Balanced flap

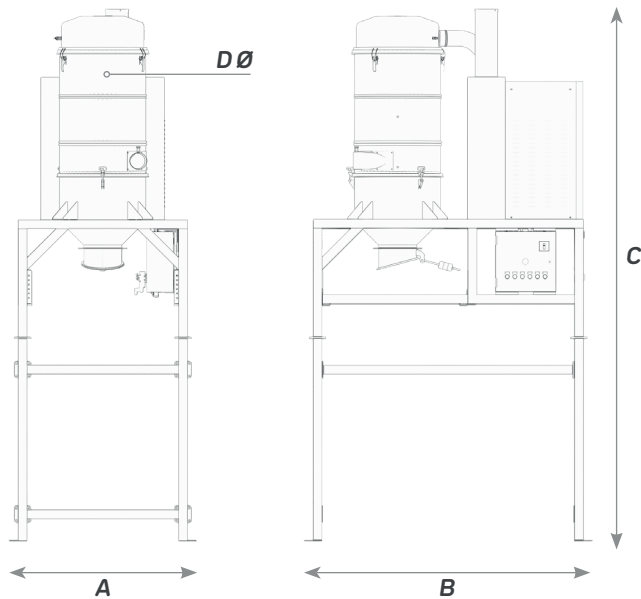


Double electro pneumatic discharging butterfly valve



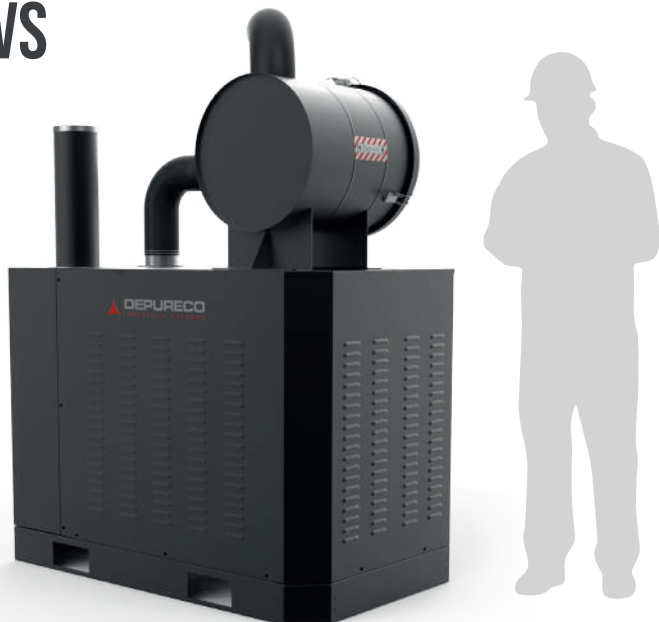
Rotary valve for continuous hopper discharge

Deep in	Length in	Height in	Chamber diameter in
A	B	C	D Ø
49	75	137	21.6
49	75	137	21.6
49	75	137	21.6
49	75	137	21.6
49	75	137	21.6
49	75	137	31.5
49	75	137	31.5
49	75	137	31.5
54	27	77	21.6





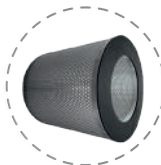
# CVS



## PRODUCT DESCRIPTION

The CVS (Central Vacuum System) is the unit that generates the vacuum inside the centralized system. Based on the necessary performance, therefore, the type of material, the distance of the pipes, the contemporaneity of the suction vents, the unit is sized according to the customer's needs. Depureco CVS are modular and allow you to install many vacuum pumps in order to always guarantee the best performance for each system.

### OPTIONS



**HEPA**  
Absolute H14 filter  
0,18 µ  
4.340/  
17.100



**E.P. WITH DISPLAY**  
Management and monitoring software with touch screen panel.



**INVERTER**  
Automatic suction speed management system for multi-operator systems.

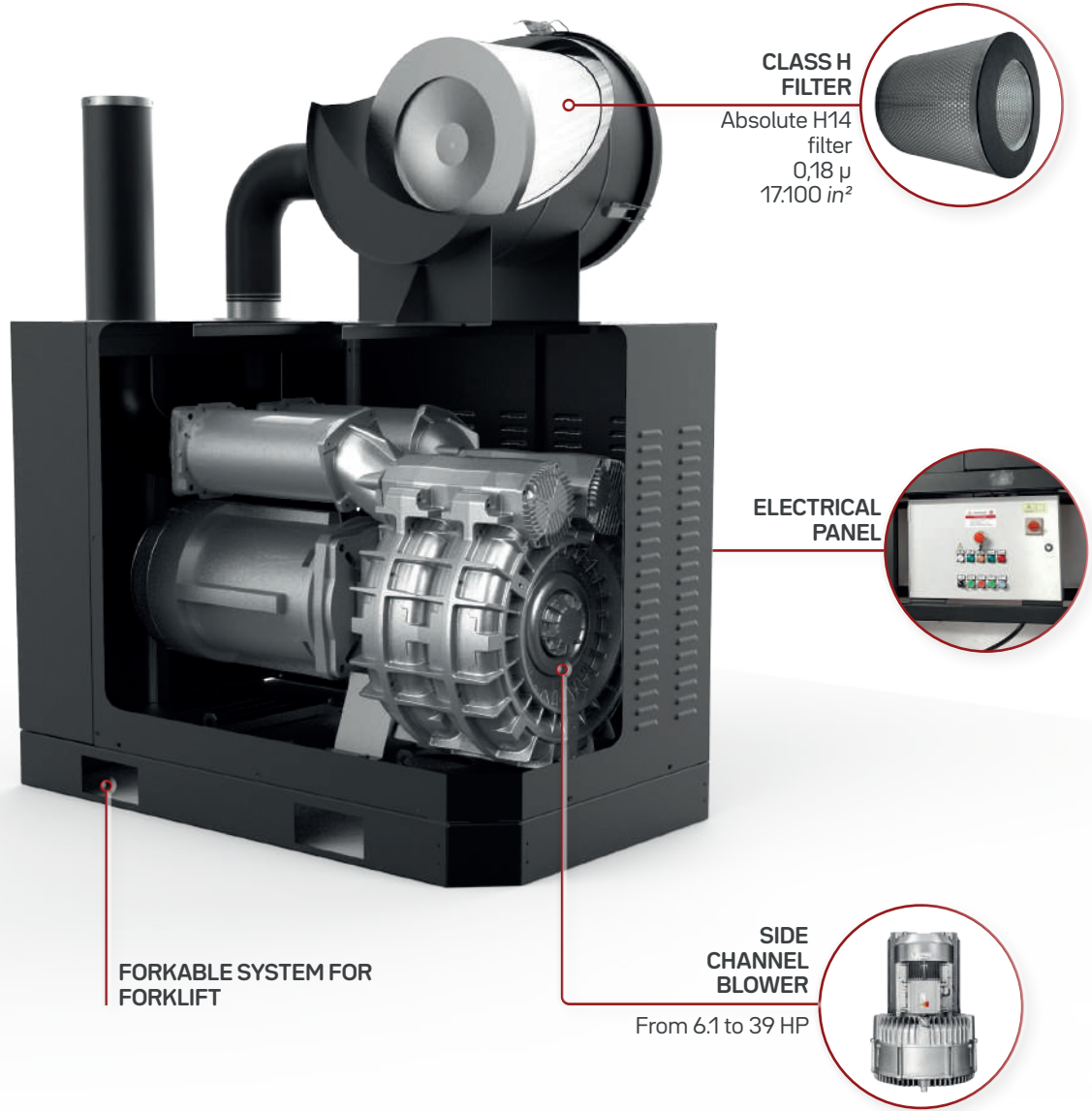


## TECHNICAL DATA

	Power HP	Voltage/ Frequency V - HZ	Air flow CFM <i>std</i>	MAX vacuum inH2O <i>std</i>	Vacuum in continuous inH2O <i>std</i>	Filter in <sup>2</sup> <b>HEPA*</b>	Noise level dB [A]
CVS 40 P	8.5	480 - 60	400	100	80	4.340	73
CVS 55 P	11.5	480 - 60	400	145	130	17.100	74
CVS 75	11.5	480 - 60	490	120	100	17.100	74
CVS 110 P	17.5	480 - 60	660	120	110	17.100	74
CVS 110 S	23.2	480 - 60	364	220	200	17.100	74
CVS 125 S	16.9	480 - 60	520	240	200	17.100	78
CVS 150	23.2	480 - 60	660	140	130	17.100	78
CVS 185	28.6	480 - 60	940	148	137	17.100	78
CVS 200 P	30	480 - 60	1354	73	64	17.100	78
CVS 200 S	30	480 - 60	776	193	176	17.100	78
CVS 250	39	480 - 60	1430	135	110	17.100	78

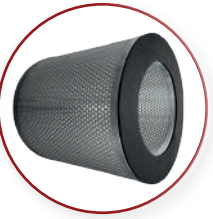


# CENTRALIZED VACUUM SYSTEMS



**CLASS H FILTER**

Absolute H14 filter  
0,18 μ  
17.100 in<sup>2</sup>



**ELECTRICAL PANEL**



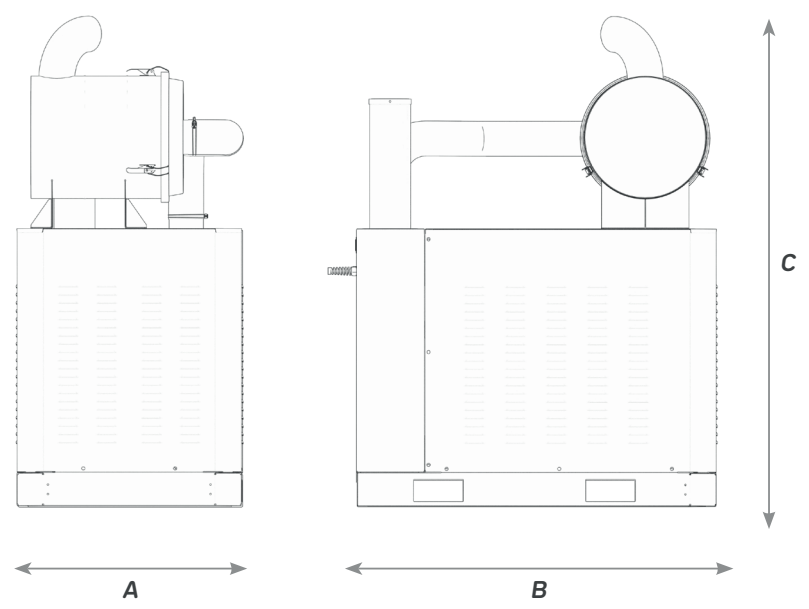
**SIDE CHANNEL BLOWER**

From 6.1 to 39 HP



FORKABLE SYSTEM FOR FORKLIFT

Deep <i>in</i>	Length <i>in</i>	Height <i>in</i>
<b>A</b>	<b>B</b>	<b>C</b>
32	52	71
32	52	71
32	52	71
32	52	71
32	52	71
32	52	71
32	52	71
32	52	71
32	52	71
32	52	71
32	52	71
32	52	71





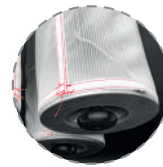
# DV-AIR 800



## PRODUCT DESCRIPTION

DV-AIR 800 is the filter unit for centralized systems, medium and large, where there are quantities of important material or the presence of difficult to filter dust. Thanks to its flexibility and the filtration system using antistatic polyester cartridges, with the possibility of using PPL protective socks, it allows to treat a wide range of pollutants even in the presence of high temperatures and humidity, guaranteeing efficiency and cleanliness of the production lines, the air quality of the production environment and the protection of those who work.

## OPTIONS



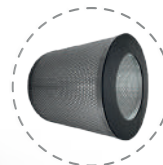
### FILTER PROTECTION SLEEVE

Optional sleeve for seeds and granulates.



### LEVEL CONTROL

Rotatory level detector



### HEPA

Absolute H14 filter  
0,18  $\mu$   
17.050 in<sup>2</sup>



### PTFE FILTER

Teflon filter cartridge.

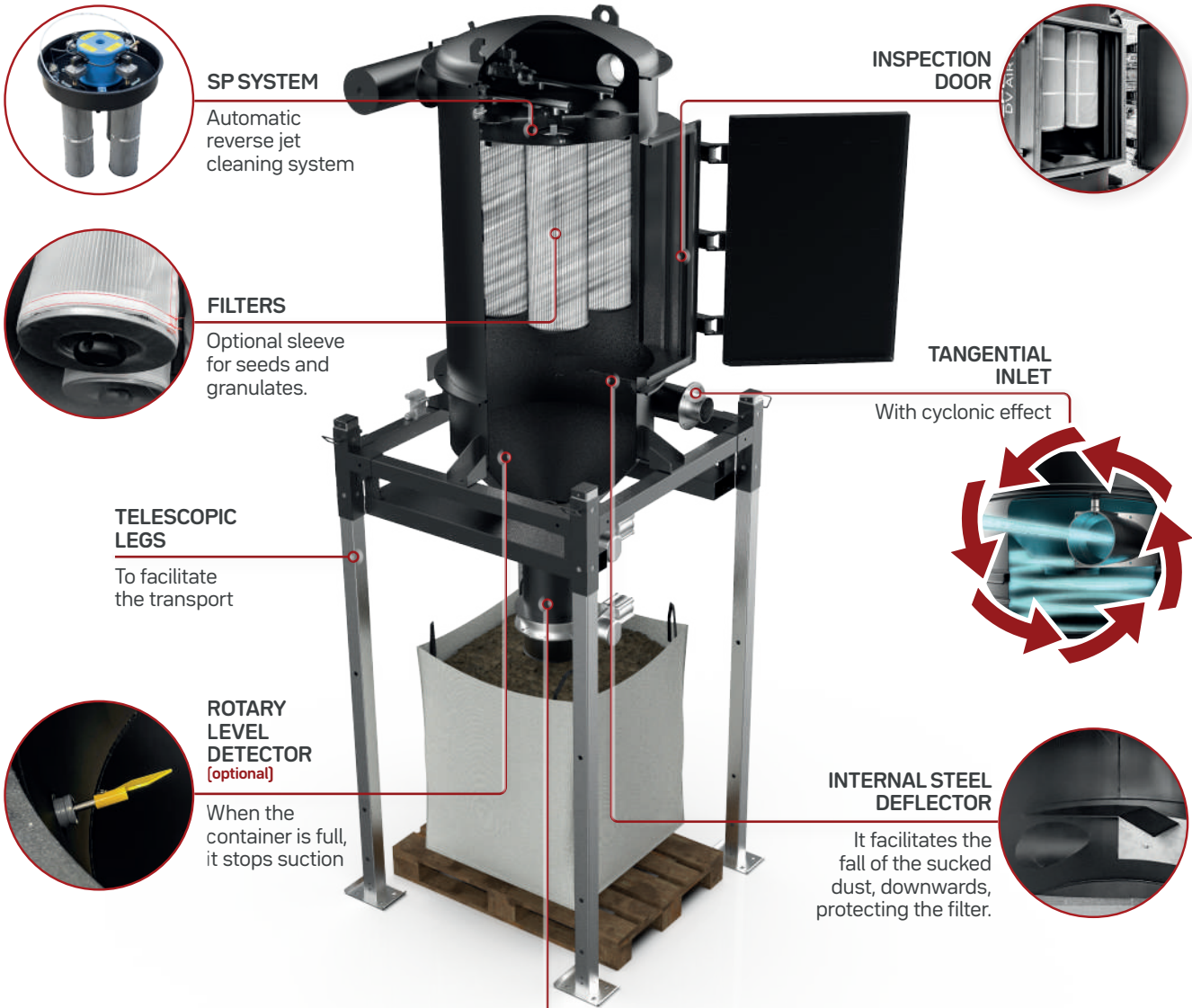


## TECHNICAL DATA

	Air tank volume gal	Valve N°	Cartridges N° / in	Surface area in <sup>2</sup>	Media	Weight lbs
DV AIR 800	4	2 x 1"	4   9 x 28	52.700	Polyester	838

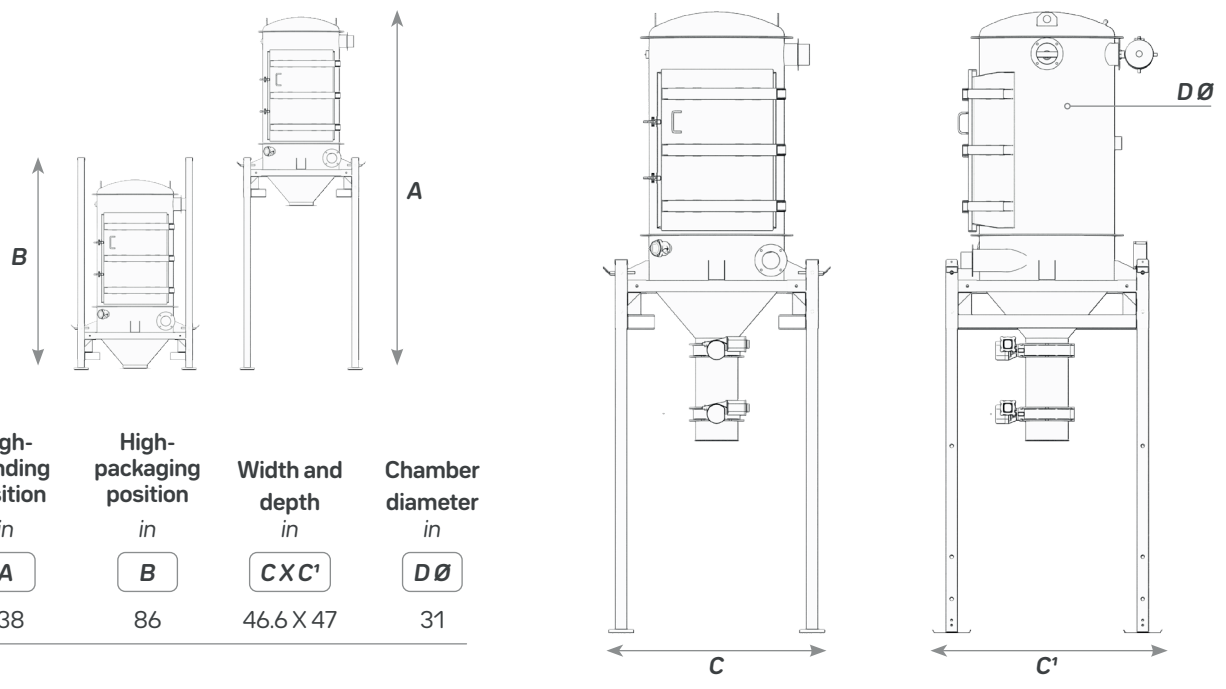
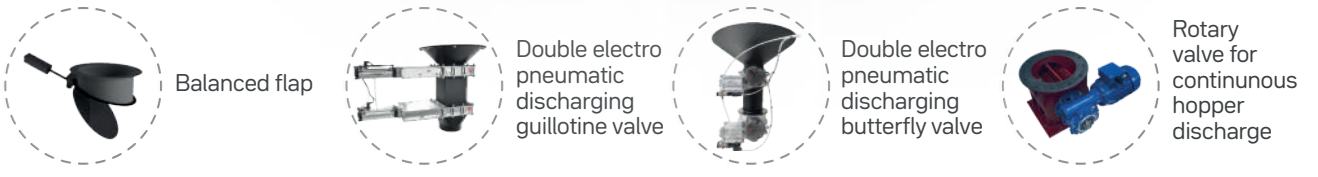


# CENTRALIZED VACUUM SYSTEMS



**DISCHARGE SYSTEM**

\* Discharge system not included





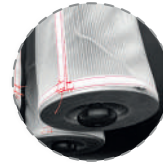
# AF



## PRODUCT DESCRIPTION

DV-AIR Flow is the high air flow filter unit par excellence useful for centralized systems, for dusts, even very fine ones. With DV-AIR it is possible to operate in several points of the production process at the same time, with different collection points. Inside the filter there are 4 large surface filter cartridges in antistatic polyester (52.700 in<sup>2</sup>), certified in class M with a filtration efficiency of 1 micron, to suck up electrostatically charged dust in total safety. The four cartridges can be coated with a protective sock, so as to protect the filters during the aspiration of solid and or granular parts. A side window allows you to perform maintenance on the filters with extreme simplicity. The DV AIR unit can be equipped with various automatic pneumatic discharging systems to maximize productivity and facilitate discharge into Big-bags.

## OPTIONS



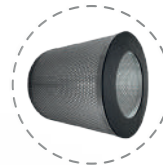
### FILTER PROTECTION SLEEVE

Optional sleeve for seeds and granulates.



### LEVEL CONTROL

Rotatory level detector



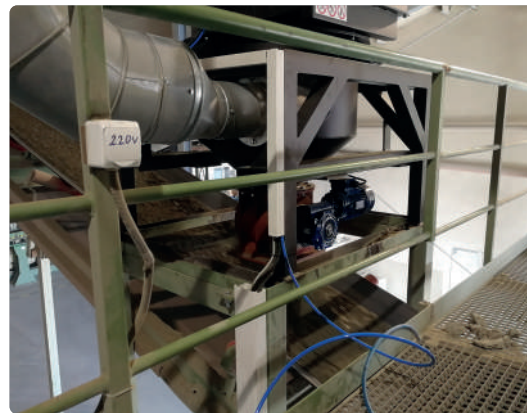
### HEPA

Absolute H14 filter  
0,18 μ  
17.050 in<sup>2</sup>



### PTFE FILTER

Teflon filter cartridge.

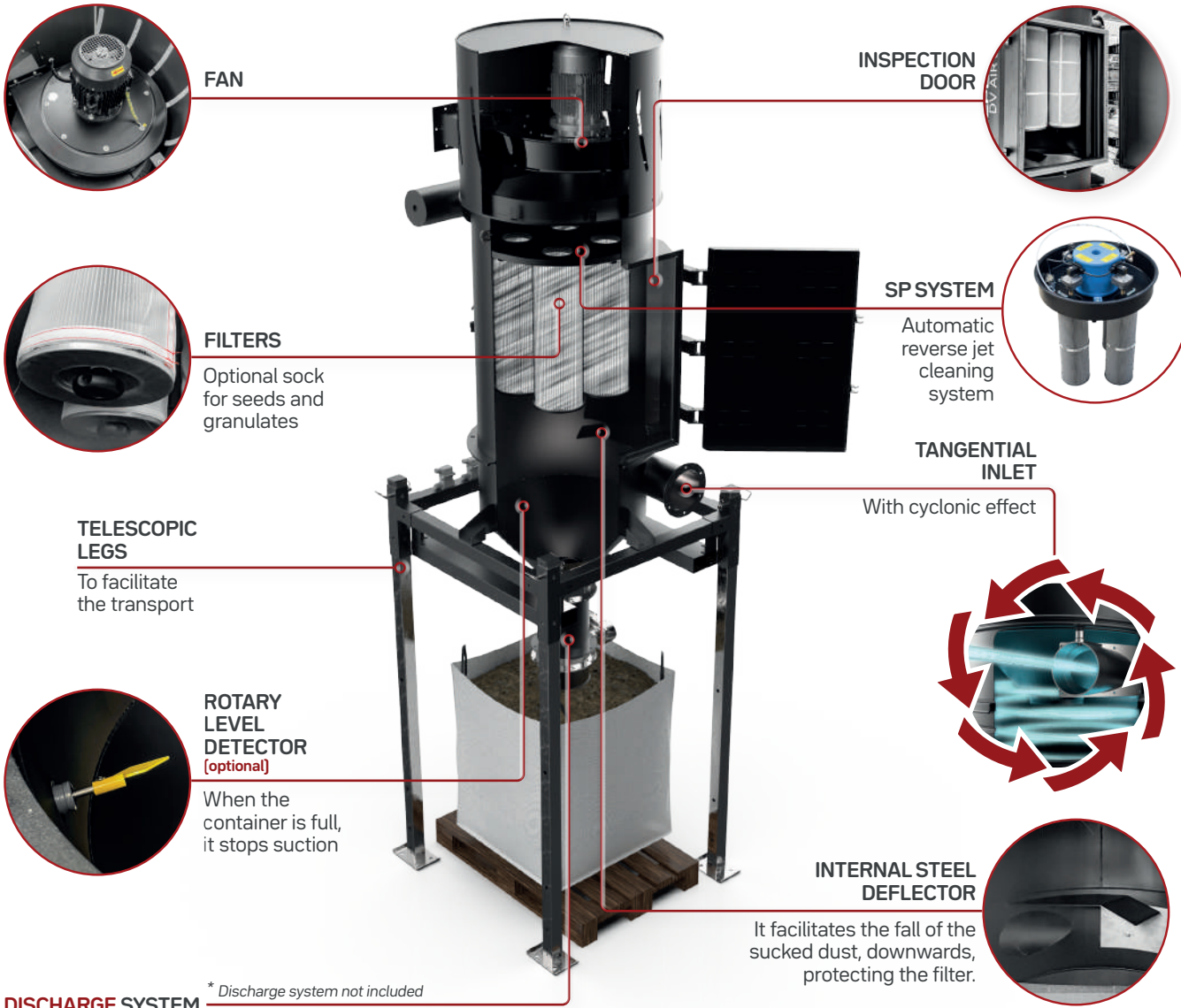


## TECHNICAL DATA

	Power HP	Voltage/ Frequency V - HZ	Max air flow CFM	Max depression in/H <sub>2</sub> O	Static depression in/H <sub>2</sub> O	Cartridges N°   in	Surface in <sup>2</sup>	Media	Weight lbs
<b>AF 40</b>	8.45	480 - 60	1600	24	23.6	4   9 x 28	52.700	Antistatic polyester	902
<b>AF 55</b>	11.53	480 - 60	2210	26.7	26	4   9 x 28	52.700	Antistatic polyester	952



# CENTRALIZED VACUUM SYSTEMS



Balanced flap



Double electro pneumatic discharging guillotine valve

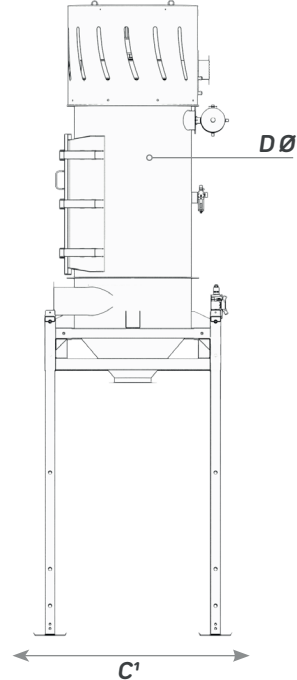
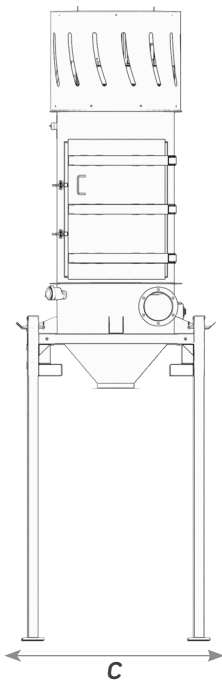


Double electro pneumatic discharging butterfly valve



Rotary valve for continuous hopper discharge

High-standing position	High-packaging position	Width and depth	Chamber diameter
in	in	in	in
<b>A</b>	<b>B</b>	<b>CXC'</b>	<b>D Ø</b>
169	102	46.6 X 47	31
169	102	46.6 X 47	31

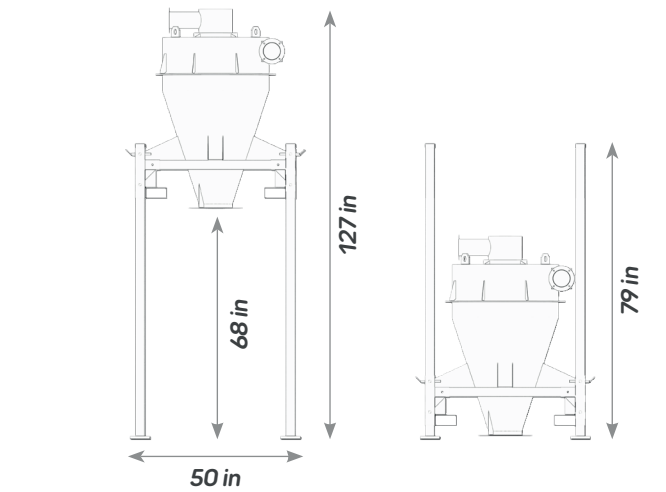
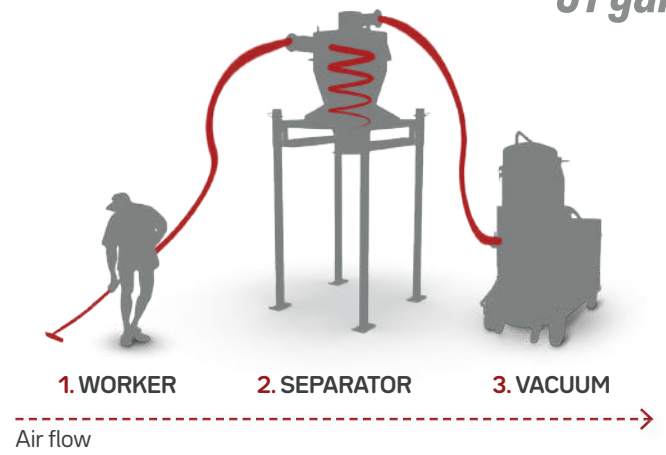




# CYCLONE HOPPER

31 gal

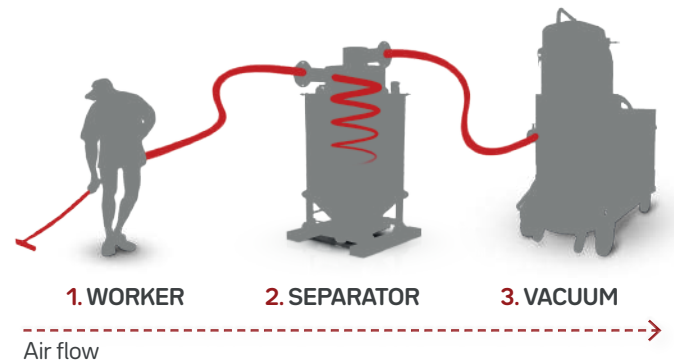
The hopper separator, with a capacity of 31 gal, allows it to be connected to a suction unit and to filter solid materials and dusts with extreme simplicity and in total safety. Thanks to a steel cone welded inside the suction chamber, a cyclonic effect is created which helps the dust to slow down and fall downwards.



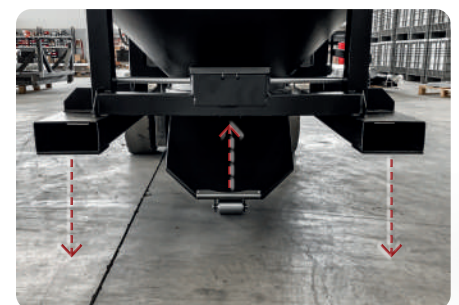
# FORKABLE CYCLONIC SEPARATOR

110 | 286 gal

The forkable cyclonic separator, with a capacity of 110/286 gal, allows it to be connected to a suction unit and to filter solid materials and dusts with extreme simplicity and in total safety. Thanks to a steel cylinder welded inside the suction chamber, a cyclonic effect is created that helps the dust to slow down and fall downwards. The separator is equipped with a convenient semi-automatic discharge system, which can be used without ever having to get off the forklift.



Practical and safe discharge system

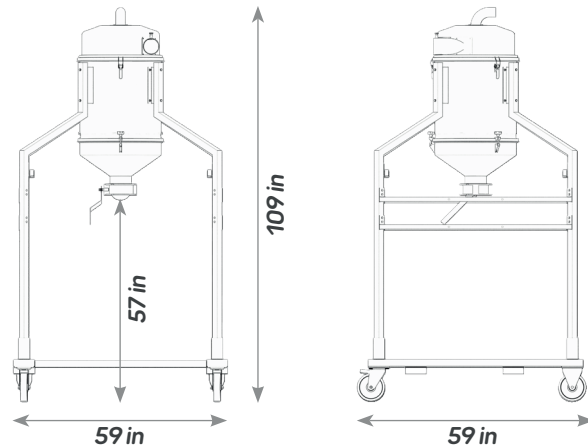
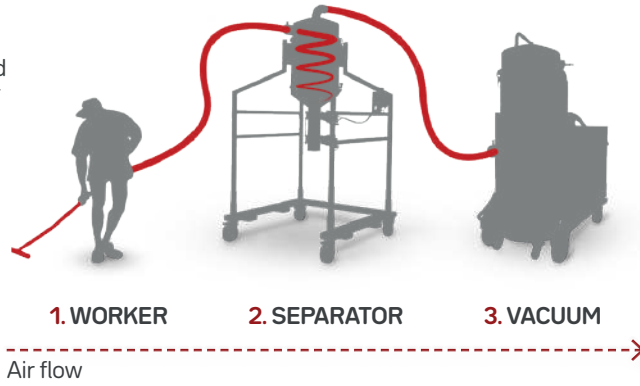


Door closing system by pressure on the floor.

## CYCLONE HOPPER ON WHEELS

44 gal

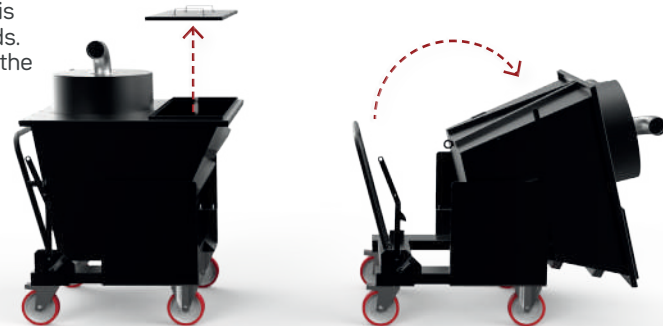
The hopper separator, with a capacity of 44 gal, allows it to be connected to a suction unit and to break down solid materials and dusts with extreme simplicity and in total safety. Thanks to a steel cone welded inside the suction chamber, a cyclonic effect is created which helps the dust to slow down and fall downwards. The hopper is mounted on a comada mobile structure on wheels to facilitate movement. It is possible to unload directly into Big-Bag bags.



## TILTABLE SEPARATOR WITH CYCLONE HEAD

128 gal

The tiltable separator, with a capacity of 128 gal, allows it to be connected to a suction unit and to break down solid materials and dusts with extreme simplicity and in total safety. Thanks to a steel cone welded inside the suction head, a cyclonic effect is created which helps the dust to slow down and fall downwards. This separator has a convenient folding system for discharge the material.



Discharge mode →



Connection with vacuum cleaner



Tiltable discharge system



# FILTERING PRE SEPARATOR

The filter separators with container, allow to be connected to a suction unit and to filter solid and liquid materials with extreme simplicity and in total safety. The separators, as standard, are equipped with a large surface bag filter. The filtering system can be implemented with a polyester cartridge system with a large filtering surface, certified class M, which allows you to clean the filters very effectively without having to interrupt the suction.

## FILTERING PRE SEPARATOR - 450

Dimensions	Ø in	17.7
Filter type		Star filter
Surface area	in <sup>2</sup>	3720
SP filter cleaning		optional
Media		Antistatic polyester
Capacity	gal	17



### SP filter cleaning [optional]

- Automatic reverse jet cleaning system
- 3 Class M antistatic polyester filters.
- 97 ft<sup>2</sup> of filtering surface.



17 gal

## FILTERING PRE SEPARATOR - 570

Dimensions	Ø in	22.4
Filter type		Star filter
Surface area	in <sup>2</sup>	6975
SP filter cleaning		optional
Media		Antistatic polyester
Capacity	gal	38



### SP filter cleaning [optional]

- Automatic reverse jet cleaning system.
- 4 Class M antistatic polyester filters.
- 129 ft<sup>2</sup> of filtering surface.



38 gal

## FILTERING PRE SEPARATOR - 800

Dimensions	Ø in	31.5
Filter type		Cartridge
Surface area	in	17.050
SP filter cleaning		included
Media		Antistatic polyester
Capacity	gal	38



### SP filter cleaning [included]

- Automatic reverse jet cleaning system.
- 4 Class M antistatic polyester filters.
- 194 ft<sup>2</sup> of filtering surface.



38 gal

## FILTERING HOPPER

The hopper filter separators allow to be connected to a suction unit and to filter solid materials and dusts with extreme simplicity and in total safety. The filtering system is composed of class M certified aluminized polyester cartridge filters, which allows you to clean the filters very effectively without having to interrupt the suction. The discharge is managed according to need with various devices available for automatically discharge into big bags, open-top containers or process belts.

### FILTERING HOPPER - 450

Dimensions	Ø in	17.7
Filter type		Cartridge
Surface area	in <sup>2</sup>	13.950
SP filter cleaning		included
Media		Antistatic polyester
Discharge system	Ø in	6

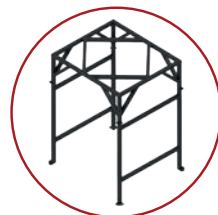


Discharge structure in Big-Bag (optional)



### FILTERING HOPPER - 570

Dimensions	Ø in	22.4
Filter type		Cartridge
Surface area	in <sup>2</sup>	18.600
SP filter cleaning		included
Media		Antistatic polyester
Discharge system	Ø in	10



Discharge structure in Big-Bag (optional)



### FILTERING HOPPER - 800

Dimensions	Ø in	31.5
Filter type		Cartridge
Surface area	in <sup>2</sup>	27.900
SP filter cleaning		included
Media		Antistatic polyester
Discharge system	Ø in	10



Discharge structure in Big-Bag (optional)





# ELECTRICAL PANEL WITH TOUCH SCREEN SYSTEM



## PRODUCT DESCRIPTION

Depureco offers the possibility of mounting a 7-inch touch display on the electrical panel for the management of the suction system, capable of managing all the functional parameters of the system with extreme ease.

## FILTER CLEANING SETTINGS

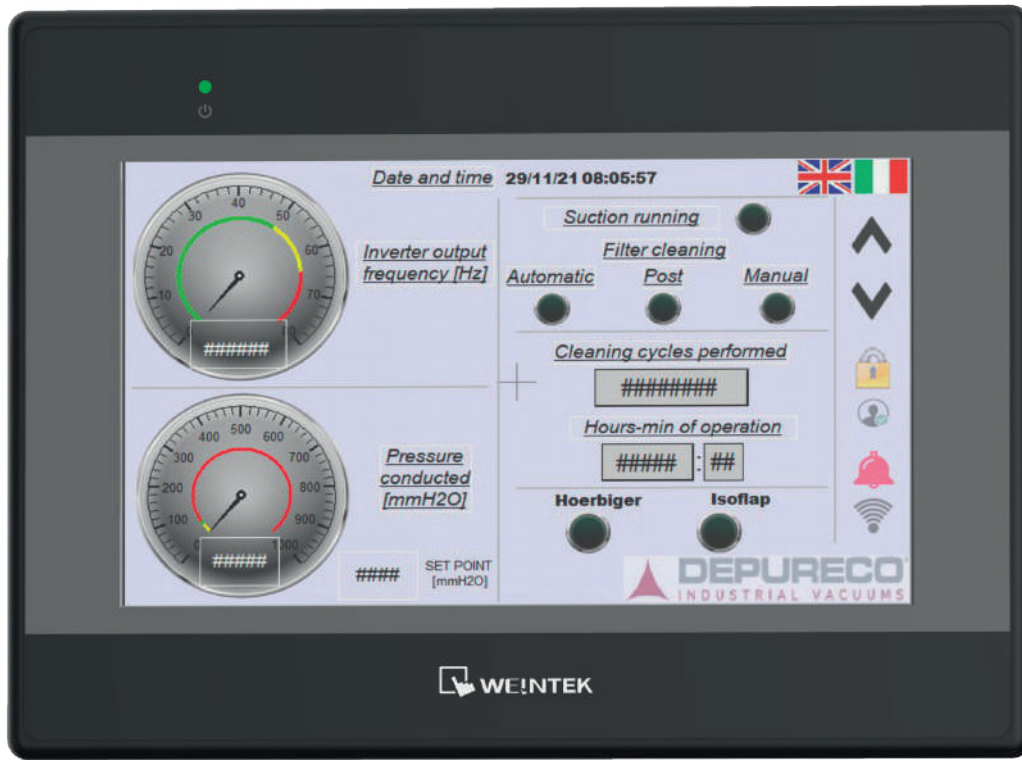


Customize the settings for automatic filter cleaning according to your needs, with extreme ease.

## DISCHARGE SETTINGS



Customize the settings for the automatic material discharge system according to your needs, with extreme ease.



**FILTER POST-CLEANING SETTINGS**



Customize the settings for automatic filter post-cleaning according to your needs, with extreme ease.

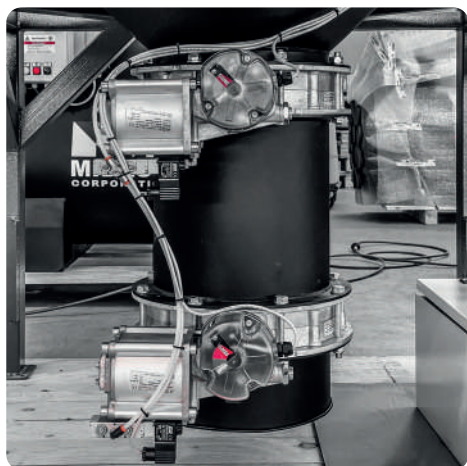
**LOGIN**



Security and convenience with multiple user management.

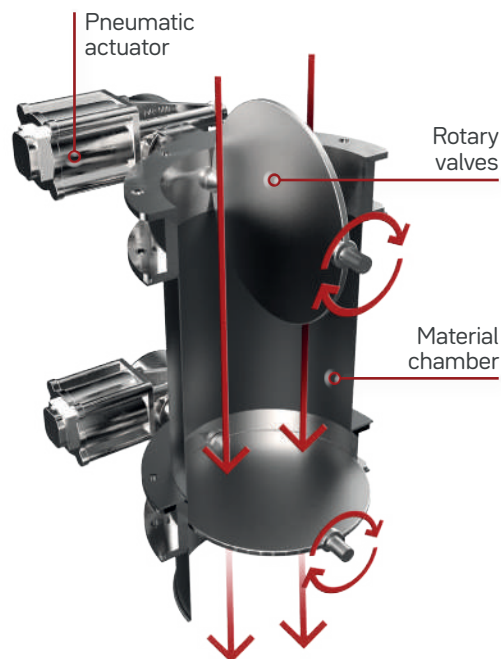


# DISCHARGE SYSTEMS

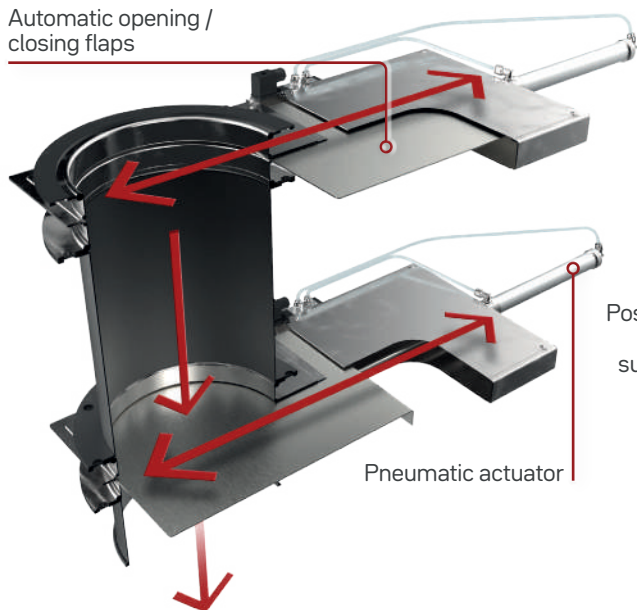


## DOUBLE ELECTRO-PNEUMATIC DISCHARGING BUTTERFLY VALVE

Possibility of continuous discharge, without the need to stop the suction, thanks to the presence of two butterfly valves. The valves open alternately to allow the material to be discharged and, at the same time, to maintain the vacuum to allow continuous suction.



Automatic opening / closing flaps



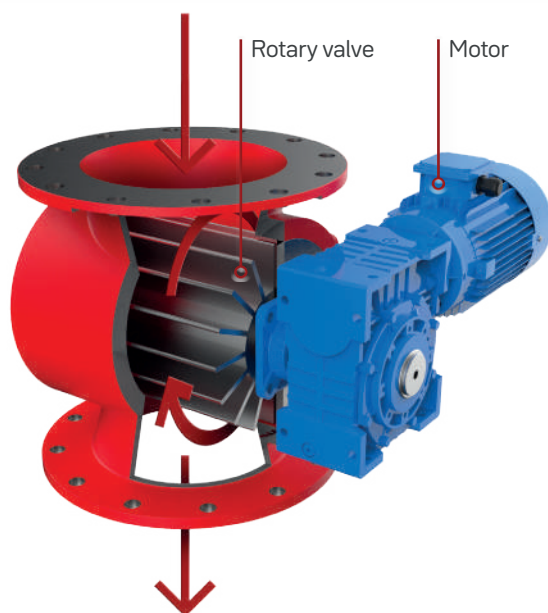
## DOUBLE ELECTRO-PNEUMATIC DISCHARGING GUILLOTINE VALVE

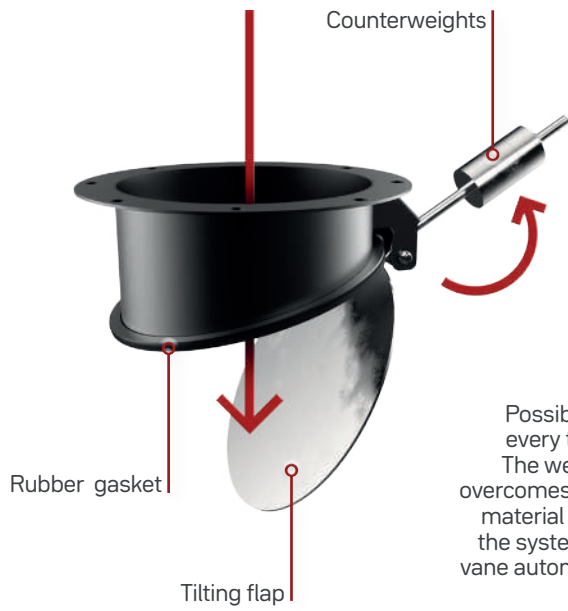
Possibility of continuous discharge, without the need to stop the suction, thanks to the presence of two guillotine valves. The valves open alternately to allow the material to be discharged while maintaining the vacuum at the same time to allow continuous suction.



## ROTARY VALVE

Possibility of continuous discharge, without the need to stop suction, thanks to the presence of a continuous rotary valve. The valve rotates continuously, thanks to a motor placed on the side, allowing a constant and uniform discharge of the sucked material.





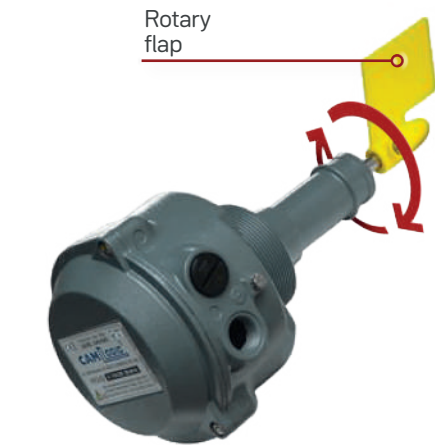
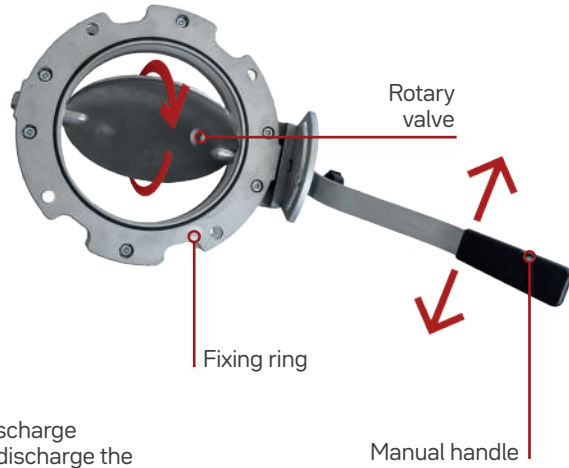
**BALANCED FLAP**

Possibility of automatic discharge every time the suction is stopped. The weight of the suction material overcomes the counterweight and the material falls down by gravity. When the system is switched on again, the vane automatically repositions itself in the closed position.



**MANUAL DISCHARGE BUTTERFLY VALVE**

The manual butterfly discharge allows you to manually discharge the material by simply opening the valve.

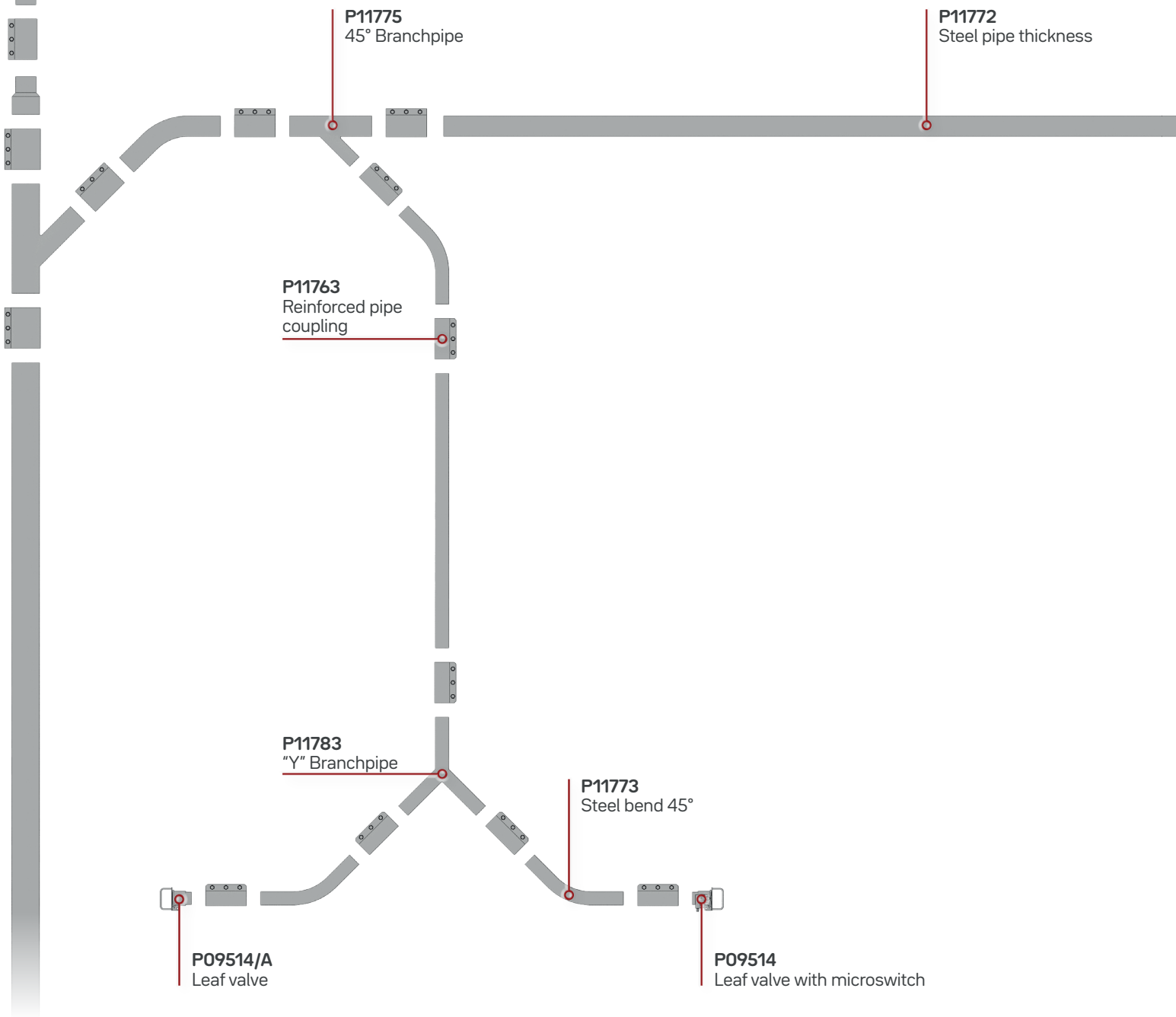


**ROTARY LEVEL DETECTOR**

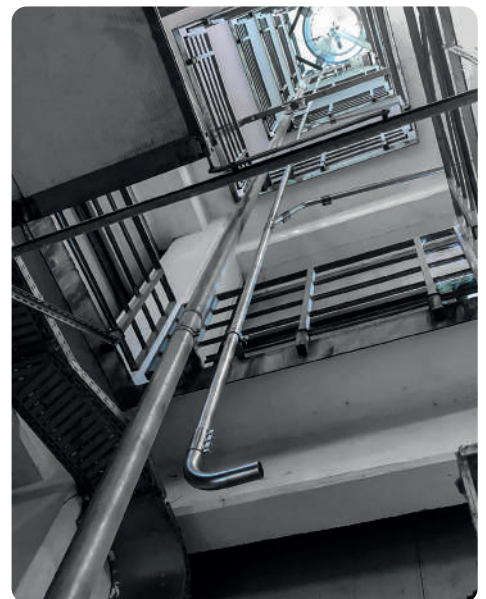
The rotary level sensor is mounted on the suction chamber or on the container of the vacuum cleaner. Inside, a vane connected to a low voltage motor rotates constantly. When the rotary vane encounters resistance, it sends a signal that immediately stops suction, giving a full container signal.

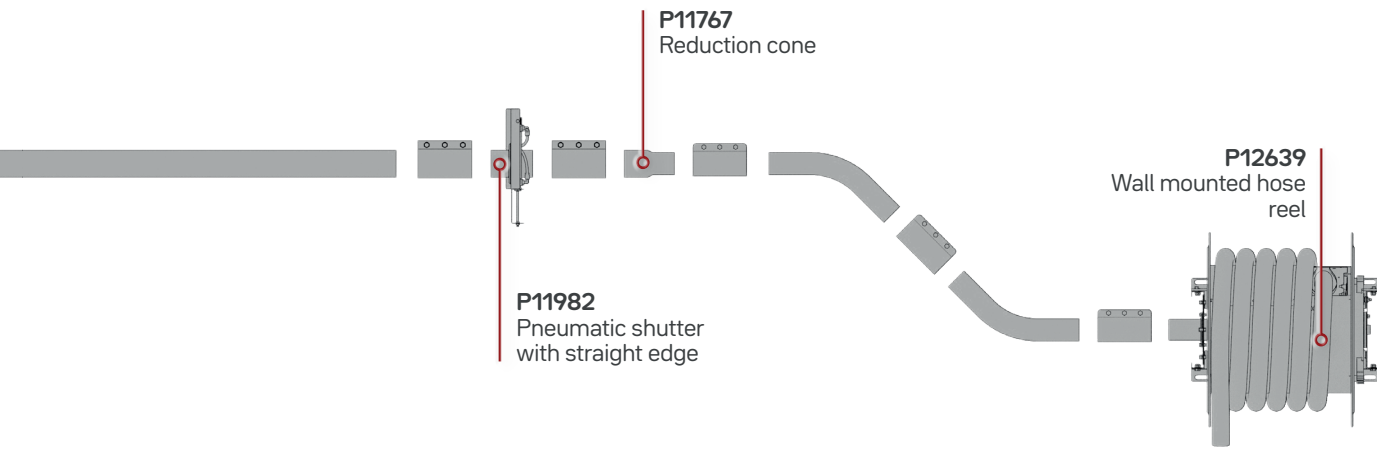






**GALLERY**





## PIPES SYSTEM

GALVANIZED HIGH VACUUM COMPONENTS

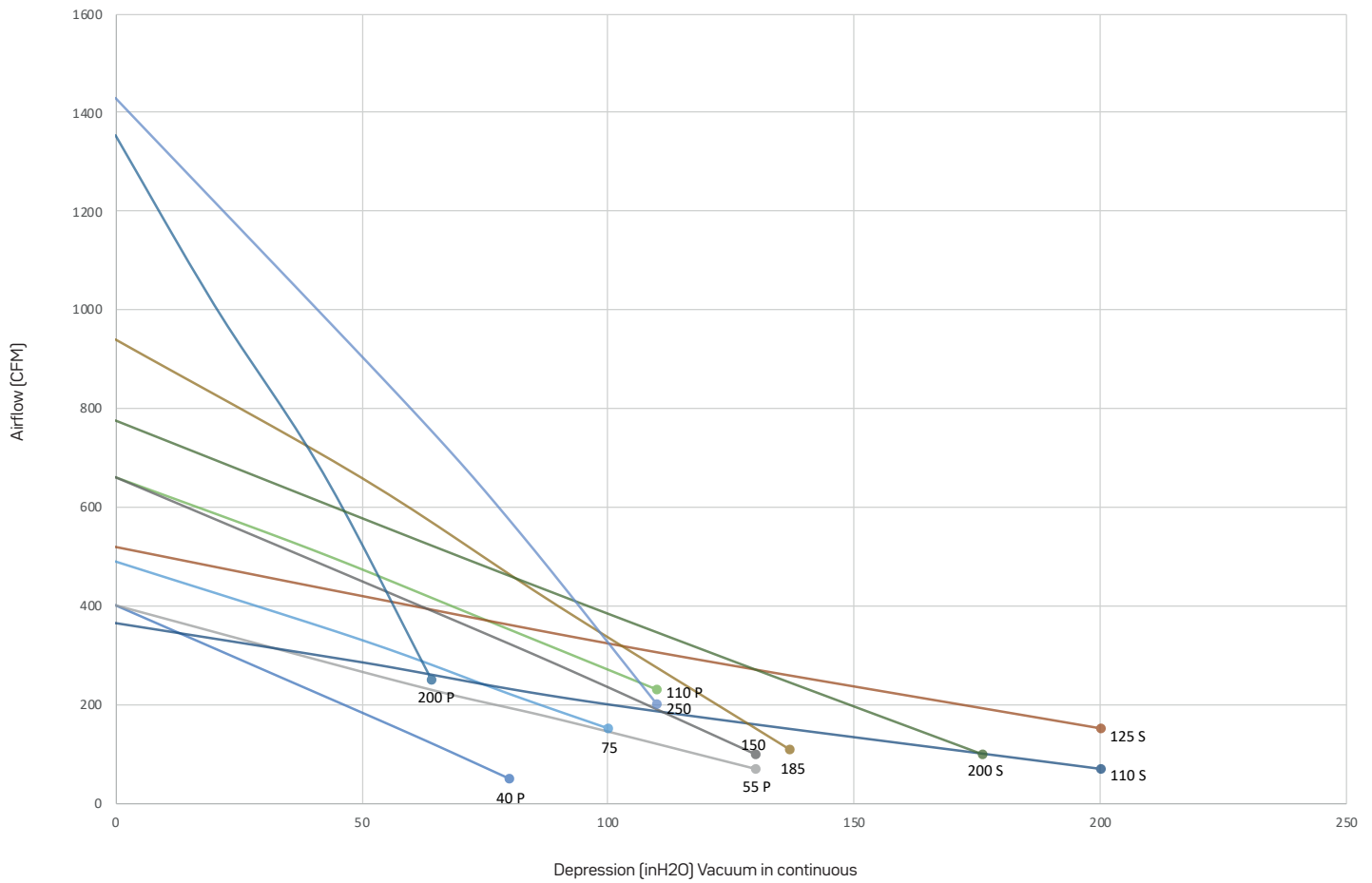
	Code	Description
	P11772	Steel pipes thickness
	P11763	Stainless steel INOX AISI 304 reinforced pipe coupling
	P09514/A	Leaf valve
	P09514	Leaf valve with microswitch
	P11770	Hose connector
	P11774	Steel bend 90°
	P11773	Steel bend 45°
	P11782	Reinforced steel bend 90°

	Code	Description
	P11783	"Y" Branchpipe
	P11775	45° Branchpipe
	P11767	Reduction cone
	P11781	End cap
	P11981	Manual shutter with straight edge
	P11982	Pneumatic shutter with straight edge
	P12639	Wall mounted hose reel
	PRV	Safety vacuum breaker valve

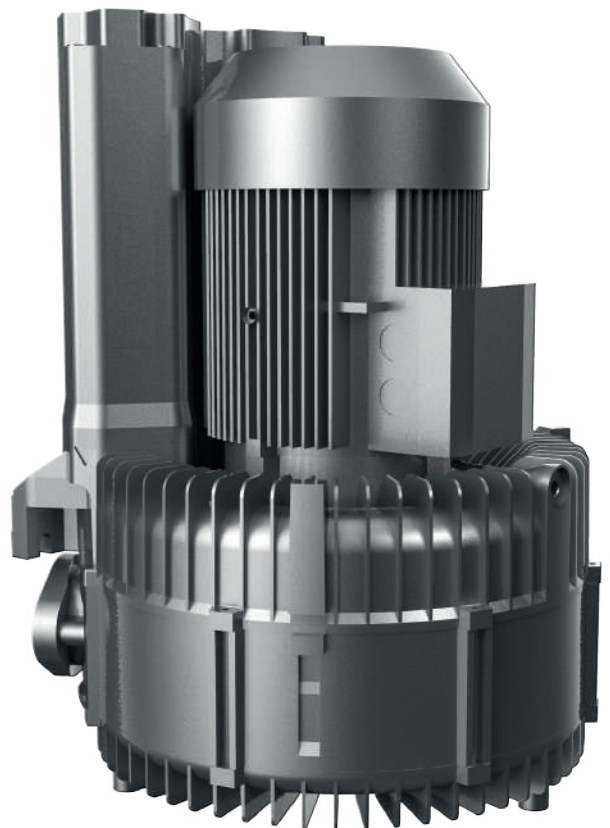


# PERFORMANCE CURVES

60 Hz



# SIDE CHANNEL BLOWERS



Code	Power	Units
40 P	8.5 HP	CVS 40 P - HF 5.5
55 P	11.5 HP	CVS 55 P - PUMA FIX 10
75	11.5 HP	CVS 75 - PUMA FIX 15 P - HF 10
110 P	17.5 HP	CVS 110 P - PUMA FIX 15 S - HF 15 P
110 S	23.2 HP	CVS 110 S - PUMA FIX 18 P - HF 15 S
125 S	16.9 HP	CVS 125 S - PUMA FIX 20
150	23.2 HP	CVS 150 - PUMA FIX 25
185	28.6 HP	CVS 185
200 P	30 HP	CVS 200 P - HF 30 P
200 S	30 HP	CVS 200 S - HF 30 S
250	39 HP	CVS 250 - HF 35 P



WHO  
BELIEVES  
IN US





# EXPERIENCE MATTERS.







**+50**

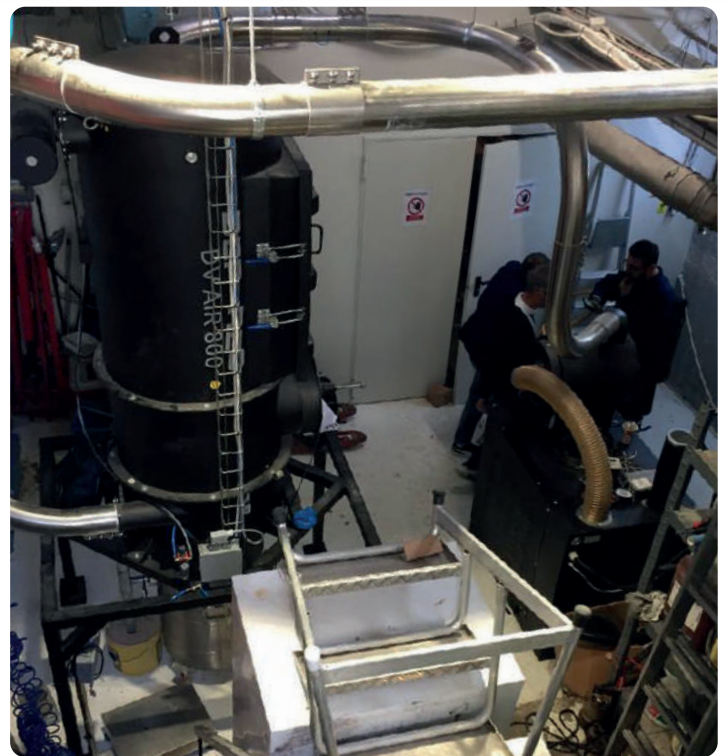
Years of activity

**+800.000**

Vacuums sold

**+120**

Countries







## DEPURECO INDUSTRIAL VACUUMS USA

19121 MARKETPLACE AVENUE, BUILDING 1, SUITE 165  
PLUM CREEK BUSINESS PARK - KYLE, TEXAS 78640  
+1 737 70 44 347  
INFO@DEPURECOUSA.COM - WWW.DEPURECOUSA.COM

