

# AC100 ATEX Z22





**Depureco Industrial Vacuums USA**

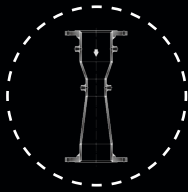
19121 Marketplace Avenue, Building 1, Suite 165  
Plum Creek Business Park • Kyle • TX 78640

[www.depurecousa.com](http://www.depurecousa.com)  
[info@depurecousa.com](mailto:info@depurecousa.com)

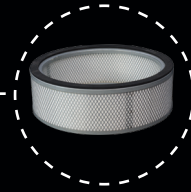


3720 in<sup>2</sup>  
  
**FILTER**

26 gal  
  
**CAPACITY**



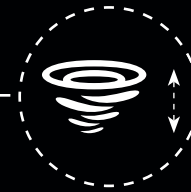
**SUCTION UNIT**



**[ OPTIONAL ]  
FILTER CARTRIDGE  
HEPA H14**



**M CLASS  
ANTISTATIC  
STAR FILTER**



**TANGENTIAL INLET  
WITH CYCLONE  
SYSTEM**

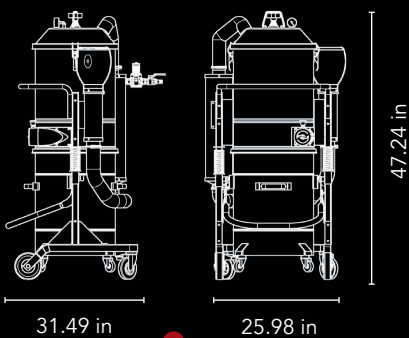
 **STAINLESS STEEL BIN  
AISI 304**


**26gal**



**ALL COMPONENTS  
ARE GROUNDED**

**HIGHLY TRANSPORTABLE**



 **Weight: 145 lbs**

**DETACHABLE BIN**



**NFPA 652 Compliance**



**ATEX Marking:**  
II 3 G/D Ex htc III B T100  
°C Gc/Dc

# SPEC SHEET

		<b>Units</b>	<b>AC100 Z22</b>
Suction type			Venturi pipe
Atex Marking			II 3 G/D Ex htc III B T100°C Gc/Dc
Pressure required		inH2O	2500-3000
Maximum vacuum		inH2O	200
Maximum air flow		CFM	282.51
Inlet		Ø in	3.15
Noise level - (EN ISO 3744)		dB(A)	70
Bin capacity		gal	26
Dimensions		in	25.98 x 31.49
Height		in	47.24
Weight		lb	145
<b>Primary filter</b>			
Type			Star filter
Surface area		in <sup>2</sup>   in	3720
(Class EN 60335-2-69)			M Class
Media			Antistatic polyester
Filter cleaning			Filter shaker
<b>Absolute filter - Optional</b>			
(Class - EN 1822)			H14
Media			Fiberglass
Surface aerea		in <sup>2</sup>	Opt H14

# ACCESSORIES



**ATEX STARTER KIT**  
Ø 1.75 in



**ATEX KIT PRO**  
Ø 1.75 in

# OPTIONAL



**GX**  
AISI 304 BIN AND CHAMBER



**PTFE ANT**  
Antistatic PTFE filter  
EN 60335-2-69



**H 14**  
Absolute filter  
EN 1822-5