



BL 45 ATEX Z22

Depureco Industrial Vacuums USA

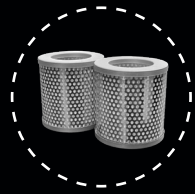
19121 Marketplace Avenue, Building 1, Suite 165
Plum Creek Business Park • Kyle • TX 78640

www.depurecousa.com
info@depurecousa.com

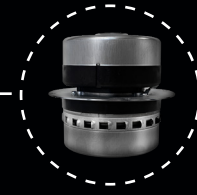
2 HP
POWER

2325 in²
FILTER

11 gal
CAPACITY



Head with double stage filtration system.



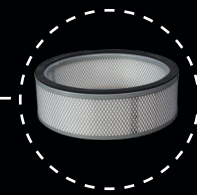
BRUSHLESS MOTOR
120 V

PRESSURE GAUGE

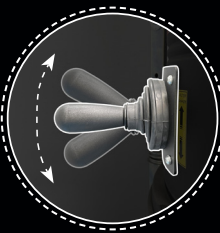
Dirty filter indicator.



M CLASS ANTISTATIC STAR FILTER



[OPTIONAL] FILTER CARTRIDGE HEPA H14



MANUAL SHAKER CLEANING SYSTEM

Smart handle for shaking the filter aggressively to release dust.

INLET WITH DEFLECTOR Ø 2 in

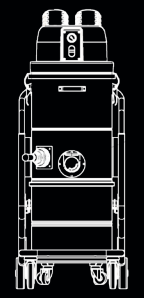


ALL COMPONENTS ARE GROUNDED

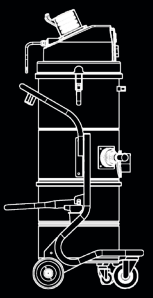
STAINLESS STEEL BIN AISI 304

11gal

HIGHLY TRANSPORTABLE



21.65 in



24.41 in

51.29 in

Weight: 99 lbs

DETACHABLE BIN



NFPA 652 Compliance



ATEX Marking:
II 3 D Ex htc III B T140°C Dc

SPEC SHEET

		Units	BL 45 ATEX Z22
Suction type			Brushless motor
Atex Marking			II 3 D Ex htc III B T284°F Dc
Power		HP	2 1 ~
Voltage Frequency		V Hz	120 50
Maximum vacuum		inH2O	92
Maximum air flow		CFM	129
Inlet		Ø in	2.75
Noise level - (EN ISO 3744)		dB(A)	72
Bin capacity		gal	11
Dimensions		in	21.65 x 24.41
Height		in	51.29
Weight		lb	99
Primary filter			
Type			Star filter
Surface area		in ² in	2325
(Class EN 60335-2-69)			M Class
Media			Antistatic polyester
Filter cleaning			Filter shaker
Absolute filter - Optional			
(Class - EN 1822)		in ²	H14
Media			Fiberglass
In suction			Opt H14
In suction			E10
Engine air inlet cooling		in ²	E10
Outgoing engine air cooling			E10

ACCESSORIES



ATEX STARTER KIT Ø 1.75 in



ATEX KIT PRO Ø 1.75 in

OPTIONAL



CYCLONIC SEPARATOR



Wet & Dry fixed brush floor tool